

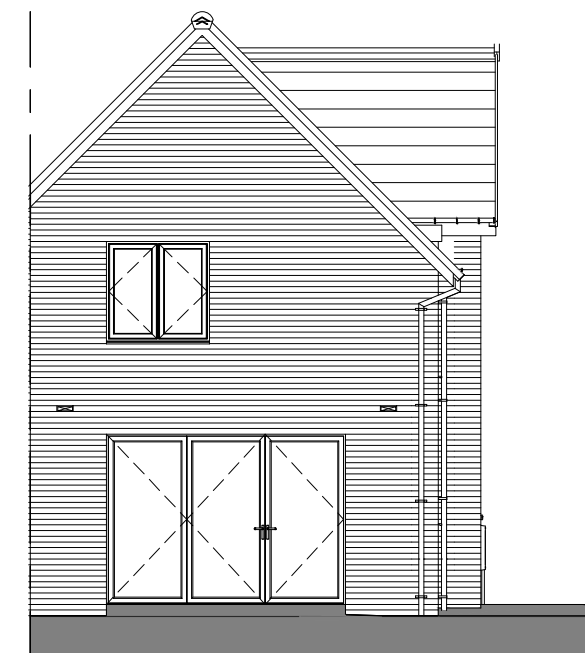
# House Type Pack Owlthorpe



Front Elevation.  
1 : 100



Left Elevation.  
1 : 100

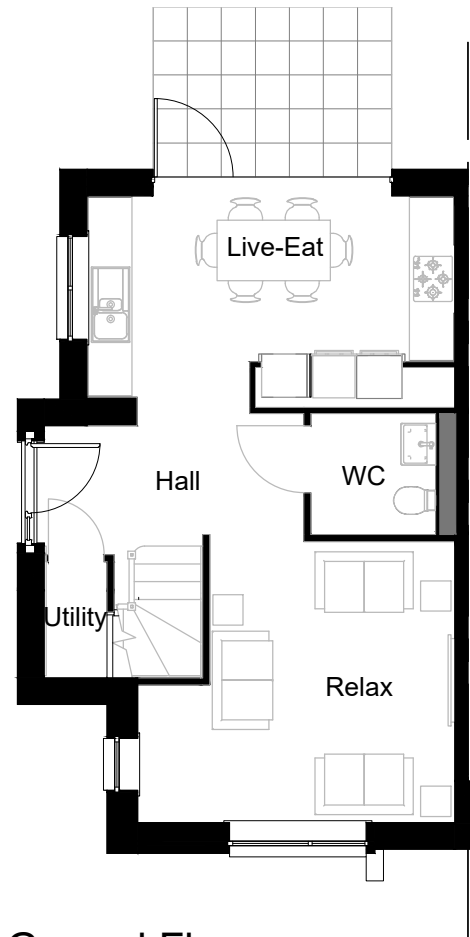


Rear Elevation.  
1 : 100

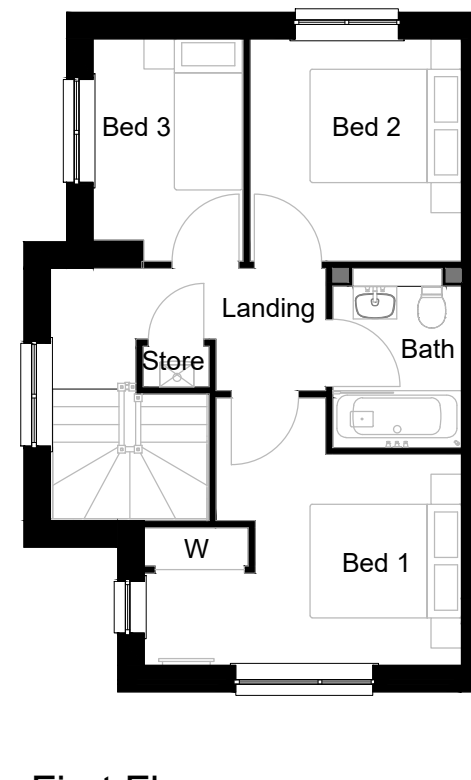
REV	DATE	BY	AMENDMENTS
B	15/03/2019	MB	Colour elevations added. Fuse switch incorporated into elec box.
A	21/12/2018	LB	First Issue
			
<b>O7 SPECIFICATION</b>			
<b>Construction</b>			
<b>Area: 81.8 m<sup>2</sup> / 881 sq.ft.</b>			
DATE:	SCALE @ A3:	DRAWN BY:	
06/11/2018	1 : 100	LB	
DWG TITLE:			
Planning Sheet - Elevations			
Owlthorpe Special			
HOUSE TYPE:			
Easton - End			
COINS REFERENCE:			
ETN3GME			
DRWG No:			REV:
ETN/002			C

Total Internal Area (All Floors)

Ground Floor GIA	40.9 m <sup>2</sup>	440 ft <sup>2</sup>
First Floor GIA	40.9 m <sup>2</sup>	440 ft <sup>2</sup>
Grand total: 2	81.8 m <sup>2</sup>	881 ft <sup>2</sup>



Ground Floor.  
1 : 100

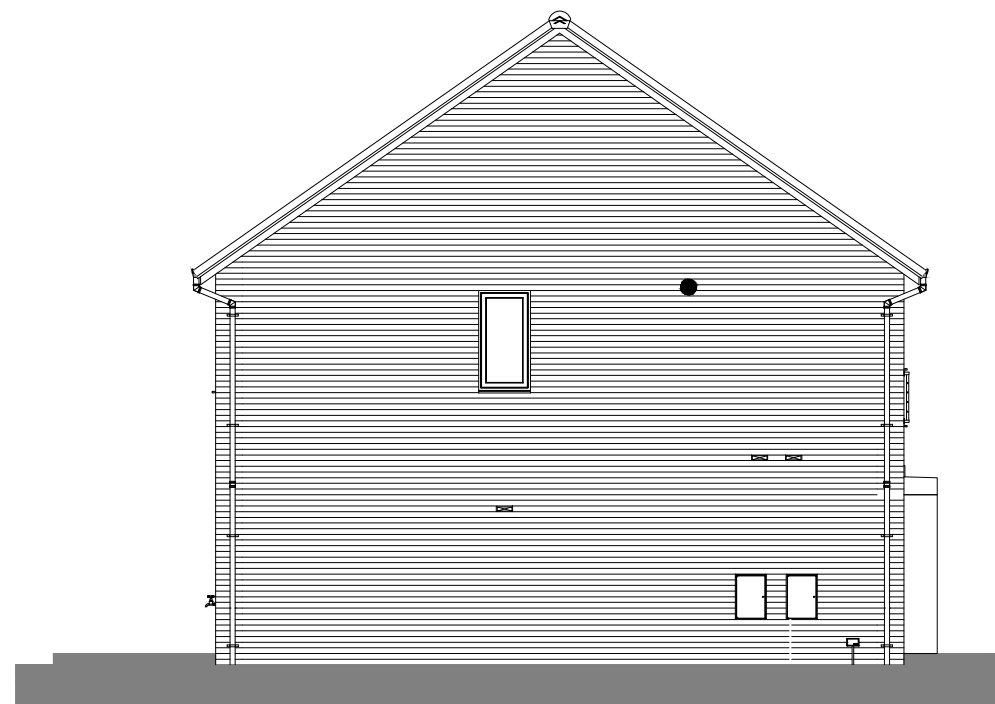


First Floor.  
1 : 100

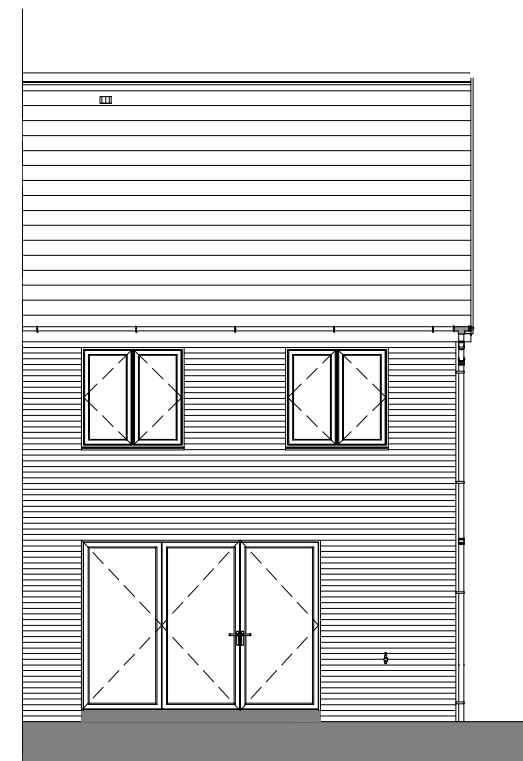
A	21/12/2018	LB	First Issue
REV	DATE	BY	AMENDMENTS
<b>AVANT</b> homes			
<b>O7 SPECIFICATION</b>			
<b>Construction</b>			
<b>Area:</b> 81.8 m <sup>2</sup> / 881 sq.ft.			
DATE:	06/11/2018	SCALE @ A3:	1 : 100
DWG TITLE:	Planning Sheet - Floor Plans Owlthorpe Special		
HOUSE TYPE:	Easton - End		
COINS REFERENCE:	ETN3GME		
DRWG No:	ETN/001	REV:	A



Front Elevation.  
1 : 100



Left Side Elevation.  
1 : 100

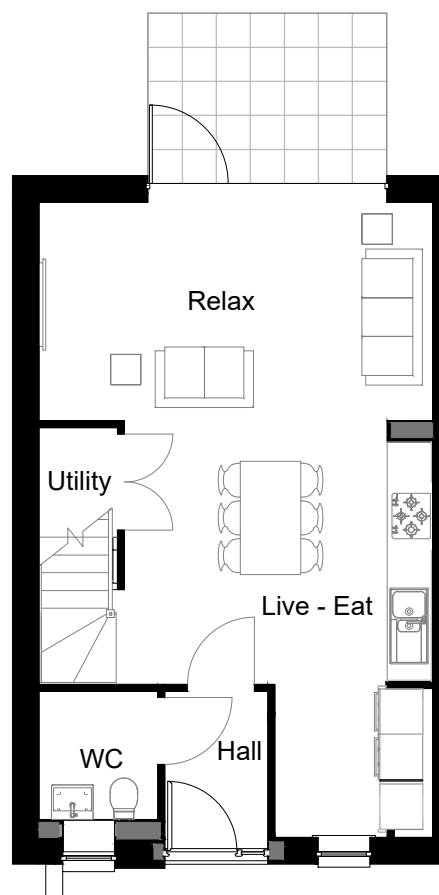


Rear Elevation.  
1 : 100

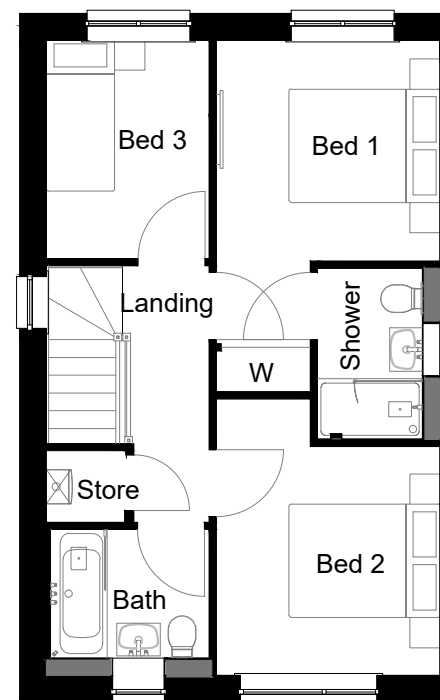
REV	DATE	BY	AMENDMENTS
C	05/04/2019	SF	Fuse switch incorporated into Elec box. WC window resized. Balustrade design updated.
B	15/03/2019	MB	Colour elevations added.
A	21/12/2018	LB	First Issue
			
<b>O7 SPECIFICATION</b>			
<b>Construction</b>			
<b>Area:</b>		86.4 m <sup>2</sup> / 930 sq.ft.	
DATE:	SCALE @ A3:	DRAWN BY:	
23/10/2018	1 : 100	LB	
DWG TITLE:			
Planning Sheet - Elevations			
Owlthorpe Special			
HOUSE TYPE:			
Haddington - End			
COINS REFERENCE:			
HTN3GME			
DRWG No:			REV:
HTN/002			C

Total Internal Area (All Floors)

Ground Floor GIA	43.7 m <sup>2</sup>	470 ft <sup>2</sup>
First Floor GIA	43.7 m <sup>2</sup>	470 ft <sup>2</sup>
Grand total: 2	87.4 m <sup>2</sup>	941 ft <sup>2</sup>



Ground Floor.  
1 : 100

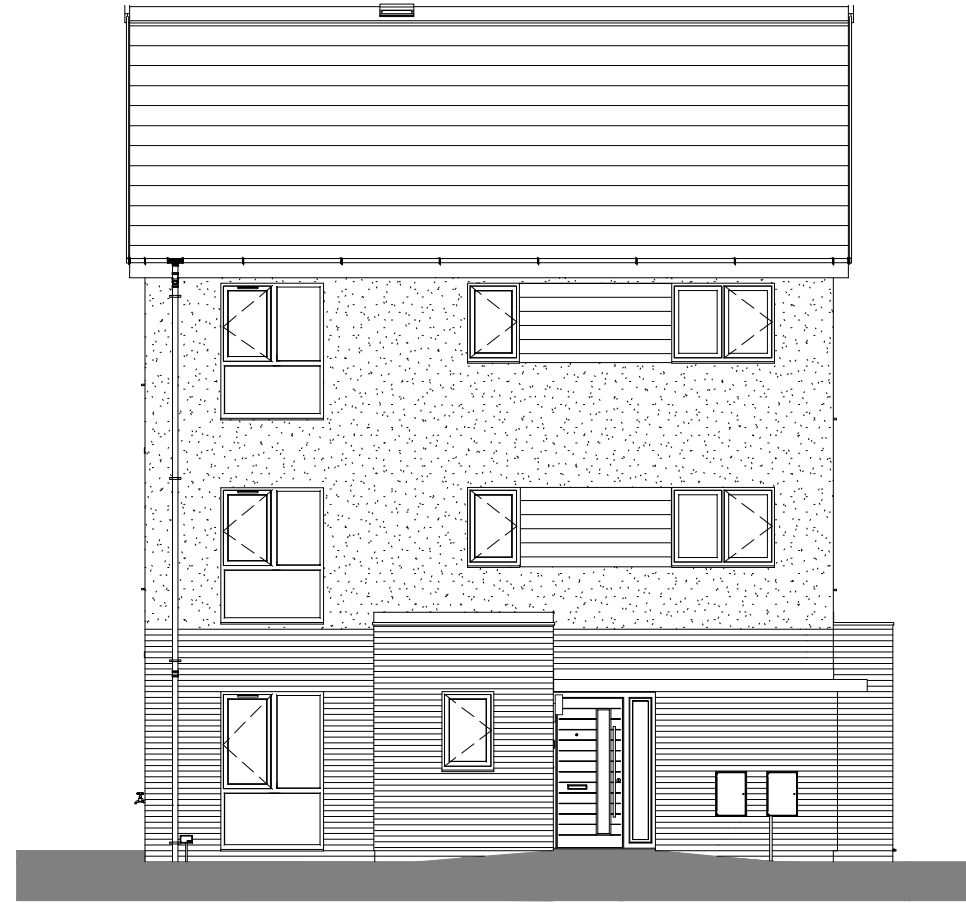


First Floor.  
1 : 100

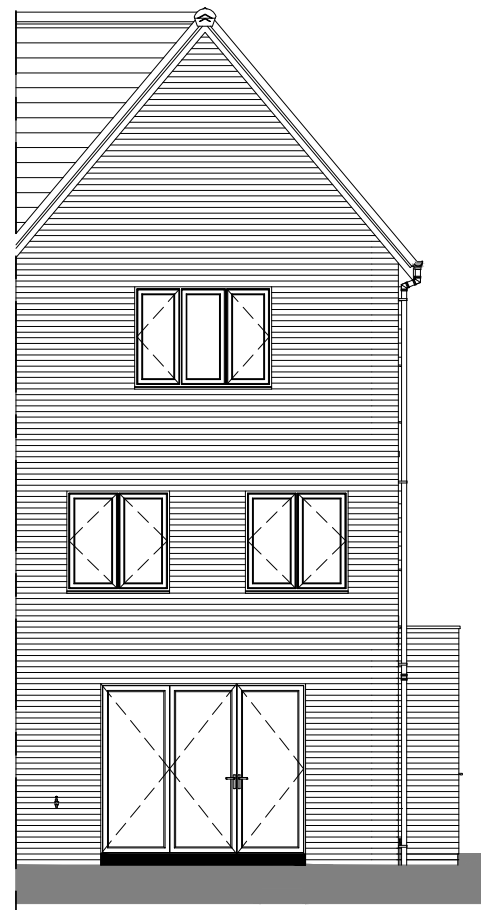
A	21/12/2018	LB	First Issue
REV	DATE	BY	AMENDMENTS
<b>AVANT</b> homes			
<b>O7 SPECIFICATION</b>			
<b>Construction</b>			
<b>Area:</b> 86.4 m <sup>2</sup> / 930 sq.ft.			
DATE:	23/10/2018	SCALE @ A3:	1 : 100
DWG TITLE:	Planning Sheet - Floor Plans Owlthorpe Special		
HOUSE TYPE:	Haddington - End		
COINS REFERENCE:	HTN3GME		
DRWG No:	HTN/001	REV:	A



Front Elevation.  
1 : 100



Left Side Elevation.  
1 : 100

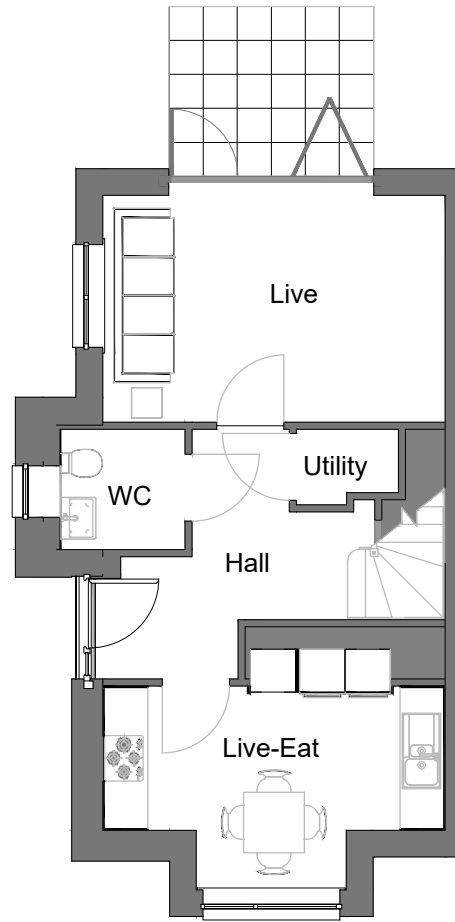


Rear Elevation.  
1 : 100

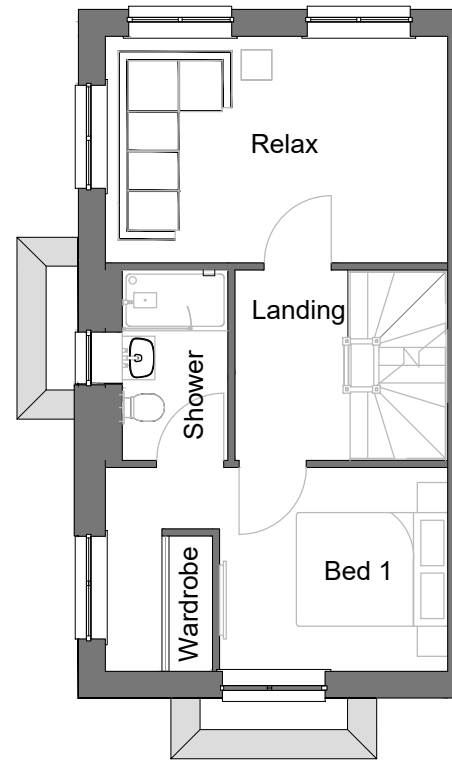
REV	DATE	BY	AMENDMENTS
			
<b>O7 SPECIFICATION</b>			
<b>Construction</b>			
<b>Area:</b> 161.9 m <sup>2</sup> / 1742.9 sq.ft.			
DATE:	25/10/2018	SCALE @ A3:	1 : 100
DWG TITLE:	Planning Sheet - Elevations Owlthorpe Special		
HOUSE TYPE:	Seaton - End		
COINS REFERENCE:	STN3GME		
DRWG No:	STN/009	REV:	A

Total Internal Area (All Floors)

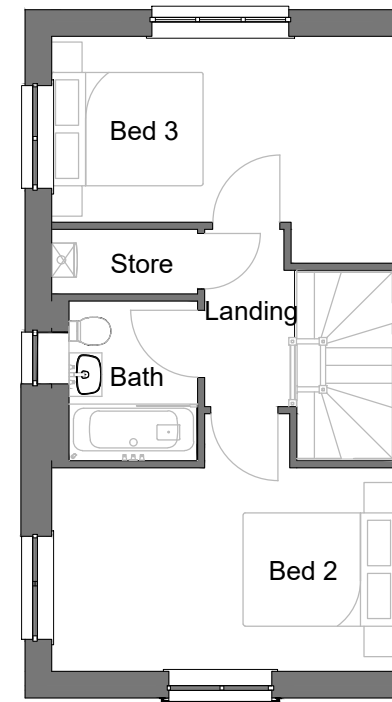
Ground Floor GIA	40.9 m <sup>2</sup>	440 ft <sup>2</sup>
First Floor GIA	38.0 m <sup>2</sup>	409 ft <sup>2</sup>
Second Floor GIA	38.0 m <sup>2</sup>	409 ft <sup>2</sup>
Grand total: 3	117.0 m <sup>2</sup>	1259 ft <sup>2</sup>



Ground Floor.  
1 : 100

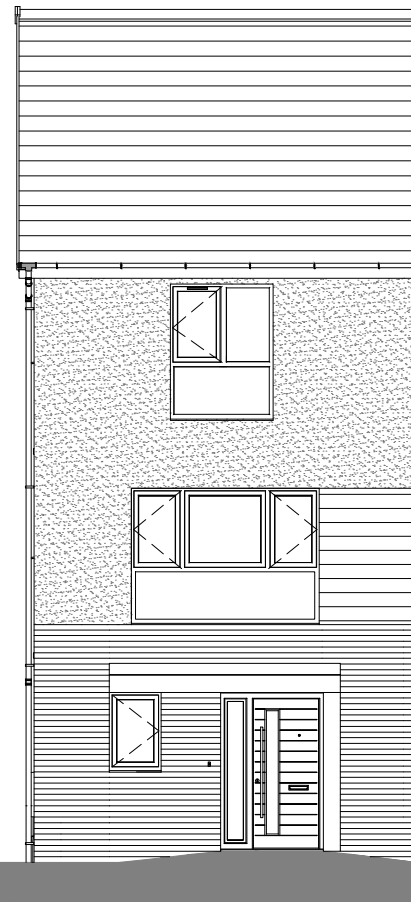


First Floor.  
1 : 100



Second Floor.  
1 : 100

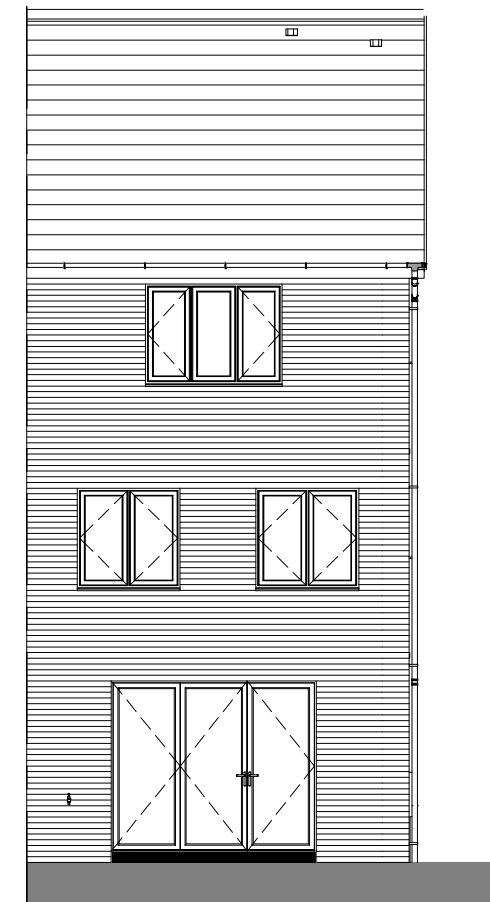
REV	DATE	BY	AMENDMENTS
A	21/12/2018	JF	First Issue
<b>AVANT</b> homes			
<b>O7 SPECIFICATION</b>			
<b>Construction</b>			
<b>Area:</b>		117 m <sup>2</sup> / 1259 sq.ft.	
DATE:	SCALE @ A3:	DRAWN BY:	
20/04/2018	1 : 100	JF	
DWG TITLE:			
Planning Sheet - Floor Plans			
HOUSE TYPE:			
Seaton - End - Vogue			
COINS REFERENCE:			
STN3GME			
DRWG No:			REV:
STN/001			A



Front Elevation.  
1 : 100



Left Elevation.  
1 : 100



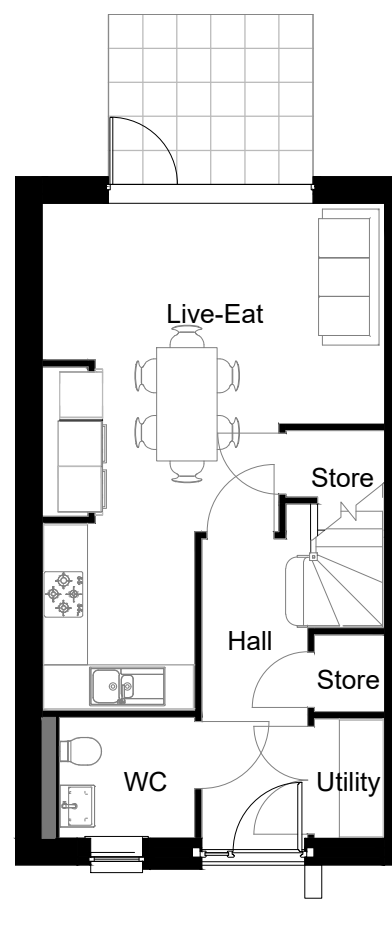
Rear Elevation.  
1 : 100

C	12/04/2019	SF	WC window resized. Balustrade design updated.
B	08/02/2019	SF	Coloured Elevations added. Utility extract duct moved to front elevation.
A	21/12/2018	LB	First Issue
REV	DATE	BY	AMENDMENTS
<b>AVANT</b> homes			
<b>O7 SPECIFICATION</b>			
<b>Construction</b>			
<b>Area:</b> 114.1 m <sup>2</sup> / 1228 sq.ft.			
DATE:	31/10/2018	SCALE @ A3:	1 : 100
DWG TITLE:	Planning Sheet - Elevations Owlthorpe Special		
HOUSE TYPE:	Paignton - End		
COINS REFERENCE:	PTN3GME		
DRWG No:	PTN/002	REV:	C

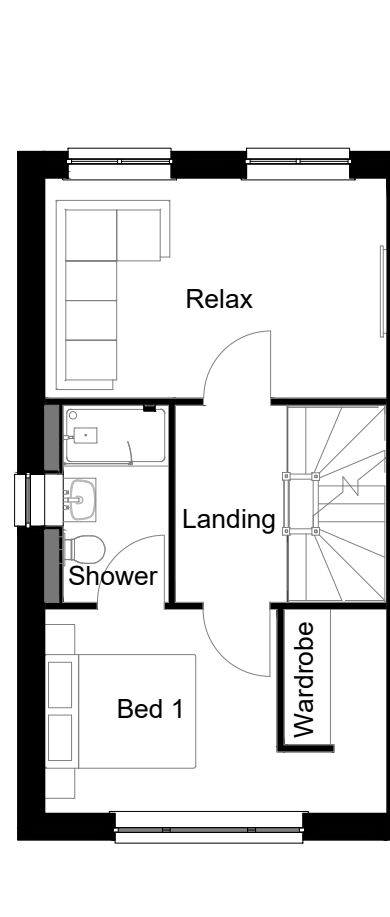


Total Internal Area (All Floors)

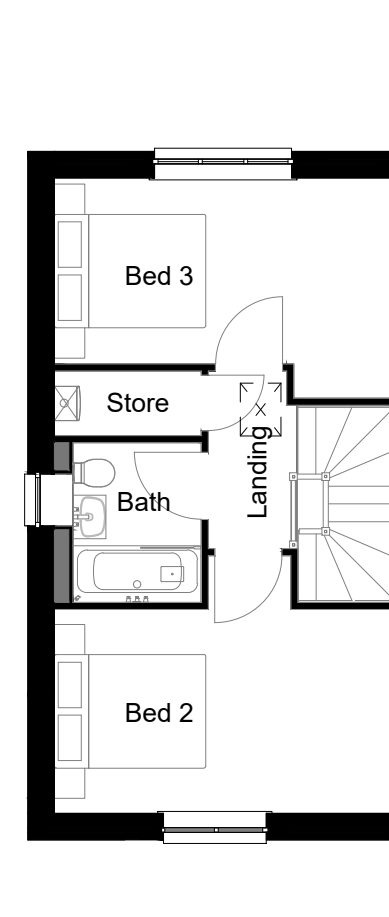
Ground Floor GIA	38.0 m <sup>2</sup>	409 ft <sup>2</sup>
First Floor GIA	38.0 m <sup>2</sup>	409 ft <sup>2</sup>
Second Floor GIA	38.0 m <sup>2</sup>	409 ft <sup>2</sup>
Grand total: 3	114.1 m <sup>2</sup>	1228 ft <sup>2</sup>



Ground Floor.  
1 : 100



First Floor.  
1 : 100



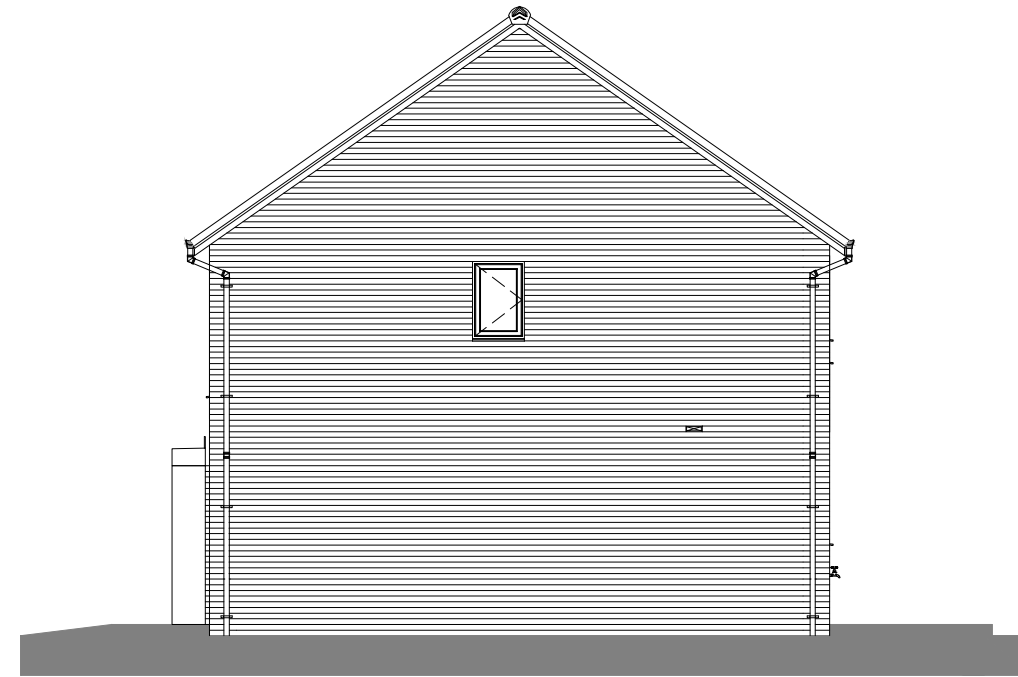
Second Floor.  
1 : 100

REV	DATE	BY	AMENDMENTS
B	09/02/2019	SF	Hall/Live-Eat partition amended.
A	21/12/2018	LB	First Issue
<b>AVANT</b> homes			
<b>O7 SPECIFICATION</b>			
<b>Construction</b>			
<b>Area:</b> 114.1 m <sup>2</sup> / 1228 sq.ft.			
DATE:	SCALE @ A3:	DRAWN BY:	
31/10/2018	1 : 100	LB	
DWG TITLE:			
Planning Sheet - Floor Plans Owlthorpe Special			
HOUSE TYPE:			
Paignton - End			
COINS REFERENCE:			
PTN3GME			
DRWG No:			REV:
PTN/001			B



Front Elevation.

1 : 100



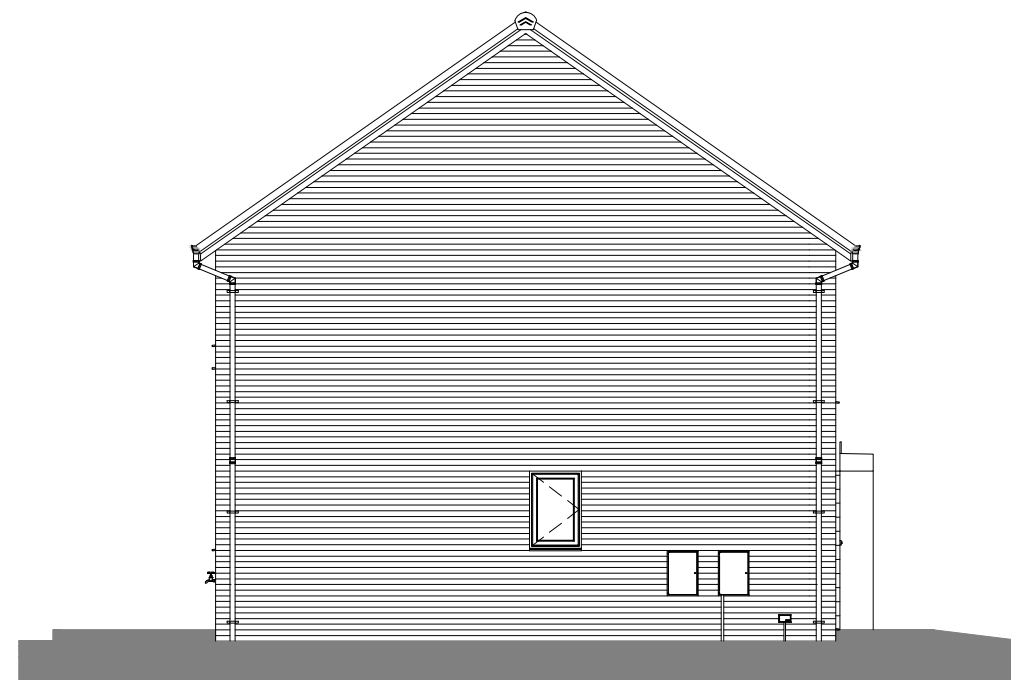
Right Elevation.

1 : 100



Rear Elevation.

1 : 100



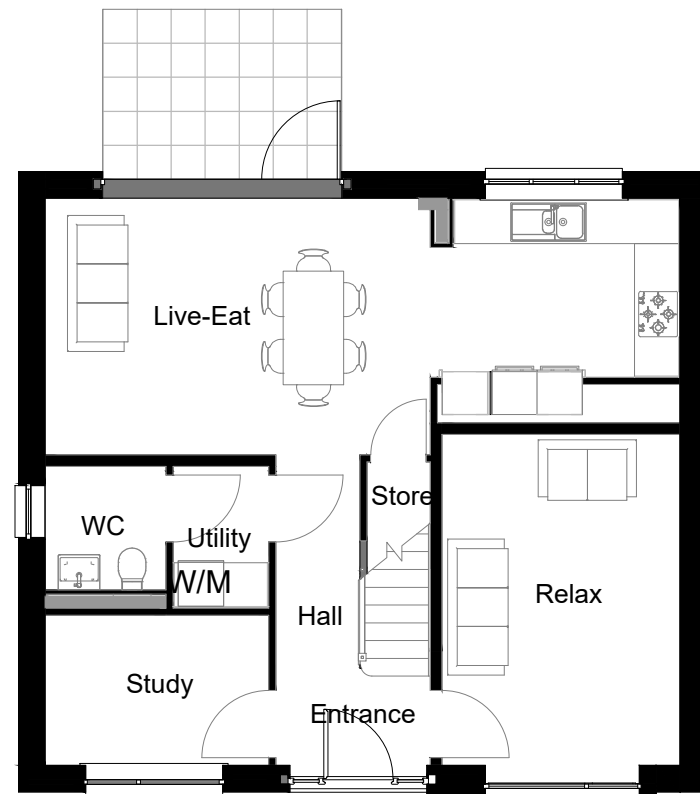
Left Elevation.

1 : 100

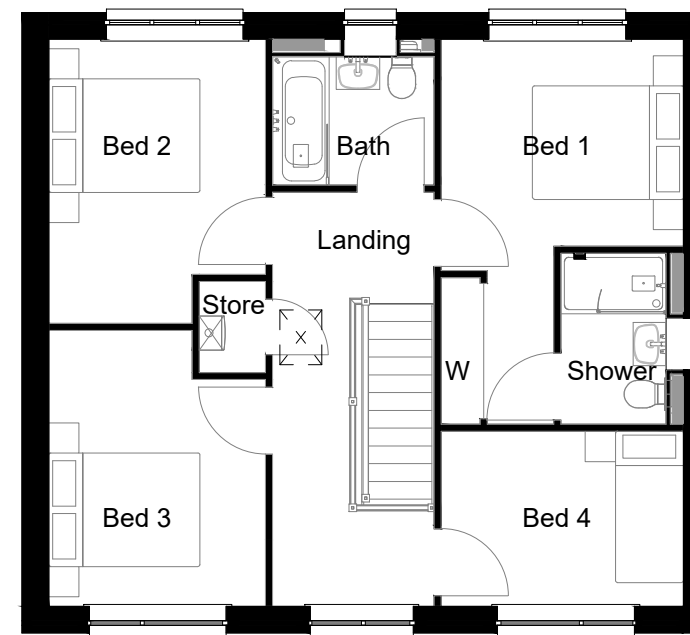
REV	DATE	BY	AMENDMENTS
B	12/04/2019	SF	Window fenestration updated to front elevation. Brick panel added. Timber cladding & canopy extents updated. Fuse switch incorporated into elec box.
A	21/12/2018	LB	First Issue
			
<b>O7 SPECIFICATION</b>			
<b>Construction</b>			
<b>Area:</b> 125.9 m <sup>2</sup> / 1355 sq.ft.			
DATE:	25/10/2018	SCALE @ A3:	1 : 100
DWG TITLE:	Planning Sheet - Elevations Owlthorpe Special		
HOUSE TYPE:	Lathbury - Det		
COINS REFERENCE:	LB4GMD		
DRWG No:	LB4GMD	REV:	C

Total Internal Area (All Floors)

Ground Floor GIA	63.0 m <sup>2</sup>	678 ft <sup>2</sup>
First Floor GIA	63.0 m <sup>2</sup>	678 ft <sup>2</sup>
Grand total: 2	125.9 m <sup>2</sup>	1355 ft <sup>2</sup>



Ground Floor.  
1 : 100



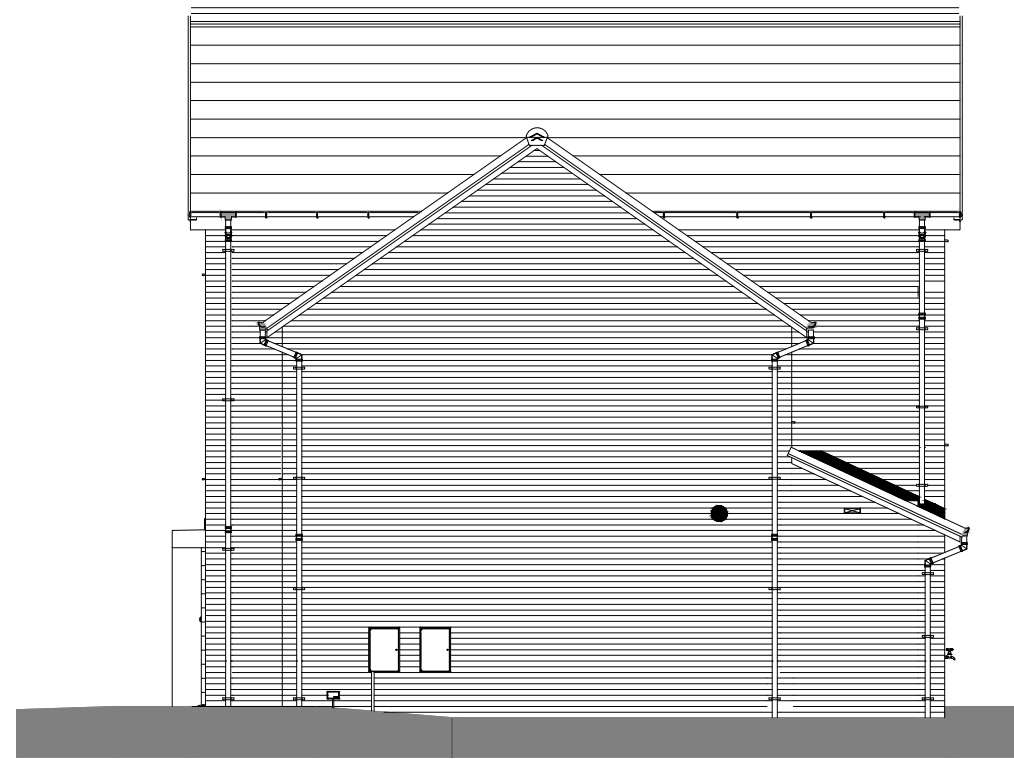
First Floor.  
1 : 100

A	21/12/2018	LB	First Issue
REV	DATE	BY	AMENDMENTS
<b>AVANT</b> homes			
<b>O7 SPECIFICATION</b>			
<b>Construction</b>			
<b>Area:</b> 125.9 m <sup>2</sup> / 1355 sq.ft.			
DATE:	25/10/2018	SCALE @ A3:	1 : 100
DRAWN BY:			LB
DWG TITLE: <b>Planning Sheet - Floor Plans</b> <b>Owlthorpe Special</b>			
HOUSE TYPE: <b>Lathbury - Det</b>			
COINS REFERENCE: <b>LB4GMD</b>			
DRWG No:	<b>LB4GMD</b>	REV:	<b>A</b>



Front Elevation.

1 : 100



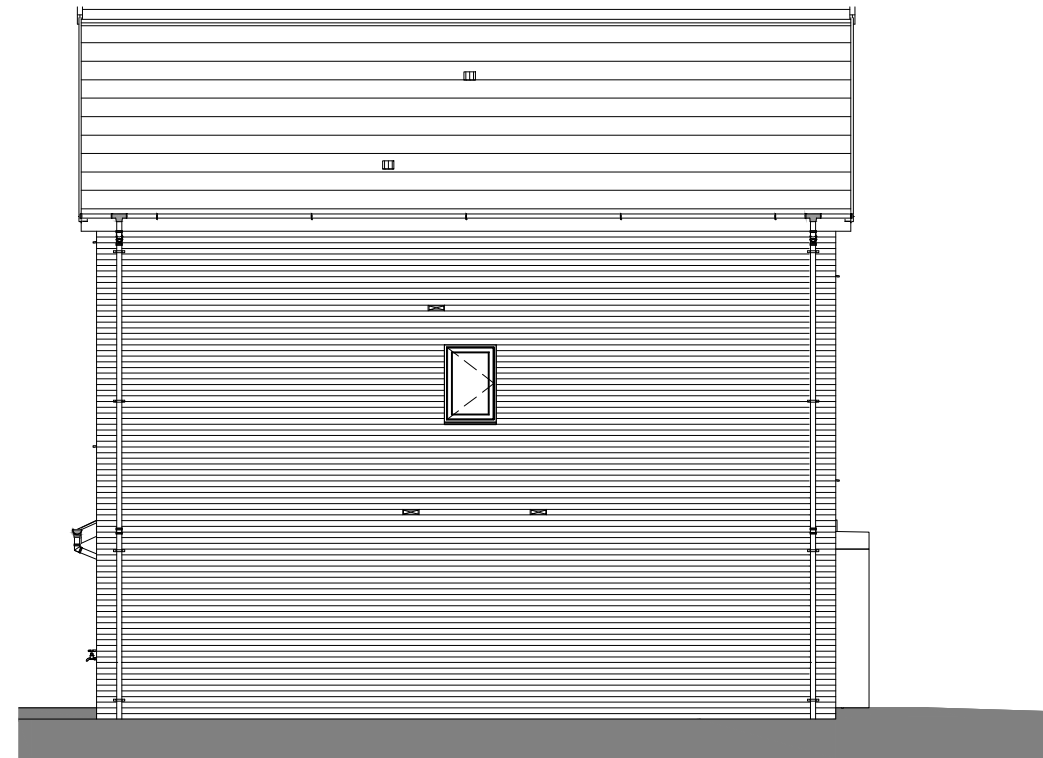
Right Elevation.

1 : 100



Rear Elevation.

1 : 100



Left Elevation.

1 : 100

REV	DATE	BY	AMENDMENTS
D	19/06/2019	EA	Area amended to 1450sqft.
C	12/04/2019	SF	Balustrade design updated. Front elevation windows resized. Extents of timber cladding increased & canopy size adjusted.
B	12/03/2019	EA	Colour elevations added, main roof fascia and window frames shown in anthracite.
A	21/12/2018	LB	First Issue

# AVANT

homes

---

**07 SPECIFICATION**

---

**Construction**

---

**Area:** 134.7 m<sup>2</sup> / 1450 sq.ft.

---

DATE: 01/11/2018	SCALE @ A3: 1 : 100	DRAWN BY: LB
---------------------	------------------------	-----------------

DWG TITLE:  
**Planning Sheet - Elevations  
Owlthorpe Special**

---

HOUSE TYPE:  
Napsbury - Det - Plot 7-8, 23 and 57-58

---

COINS REFERENCE:  
**NBY4GMD**

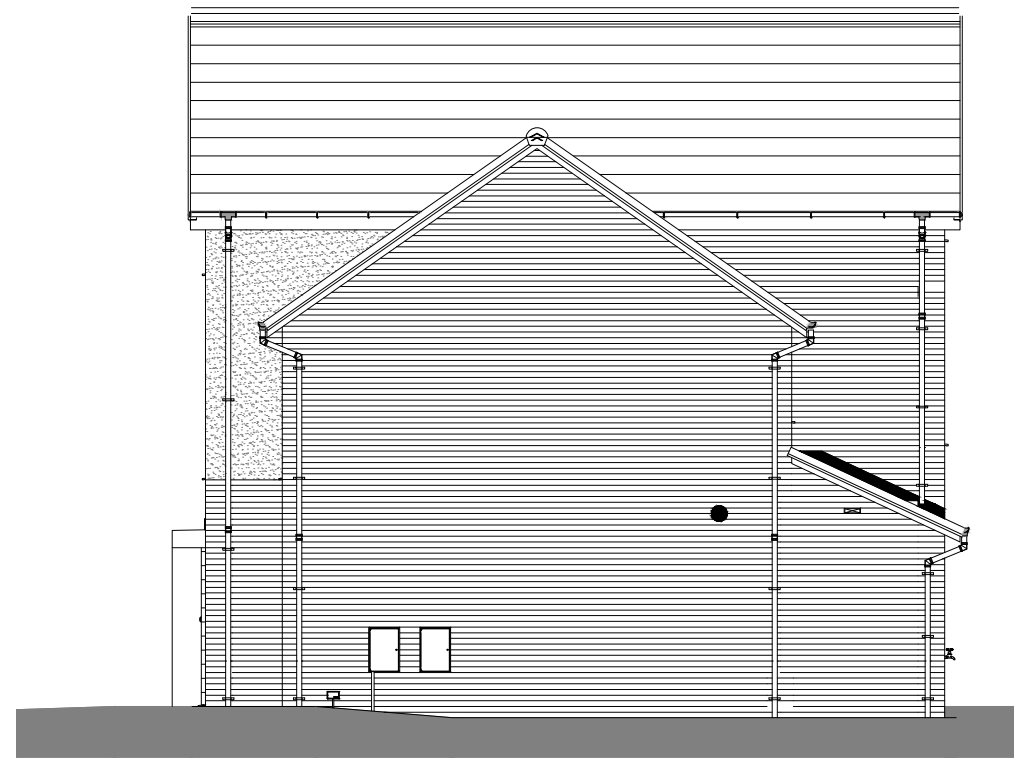
---

DRWG No: <b>NBY/002</b>	REV: <b>D</b>
----------------------------	------------------



Front Elevation.

1 : 100



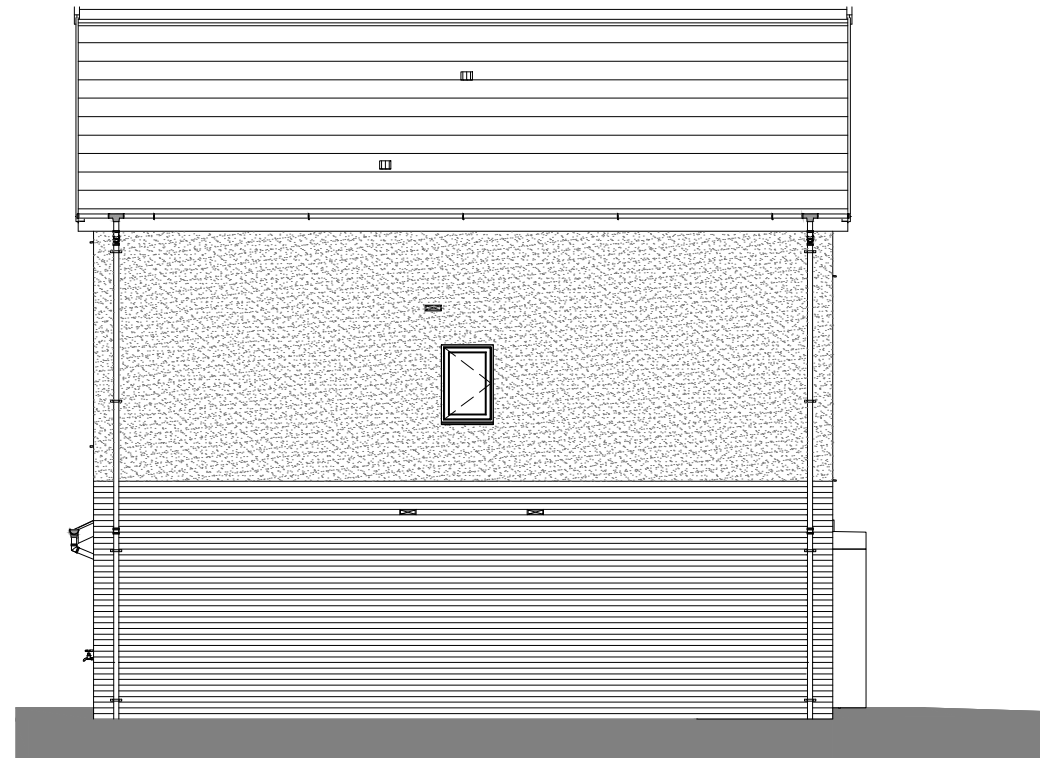
Right Elevation.

1 : 100



Rear Elevation.

1 : 100



Left Elevation.

1 : 100

REV	DATE	BY	AMENDMENTS
D	19/06/2019	EA	Area amended to 1450sqft.
C	12/04/2019	SF	Balustrade design updated. Front elevation windows resized. Extents of timber cladding increased & canopy size adjusted.
B	12/03/2019	EA	Colour elevations added, main roof fascia and window frames shown in anthracite.
A	21/12/2018	LB	First Issue

**AVANT**  
homes

**07 SPECIFICATION**

**Construction**

**Area:** 134.7 m<sup>2</sup> / 1450 sq.ft.

DATE: 01/11/2018 SCALE @ A3: 1 : 100 DRAWN BY: LB

DWG TITLE:  
**Planning Sheet - Elevations  
Owlthorpe Special**

HOUSE TYPE:  
**Napsbury - Det - Plots 3 and 47-48**

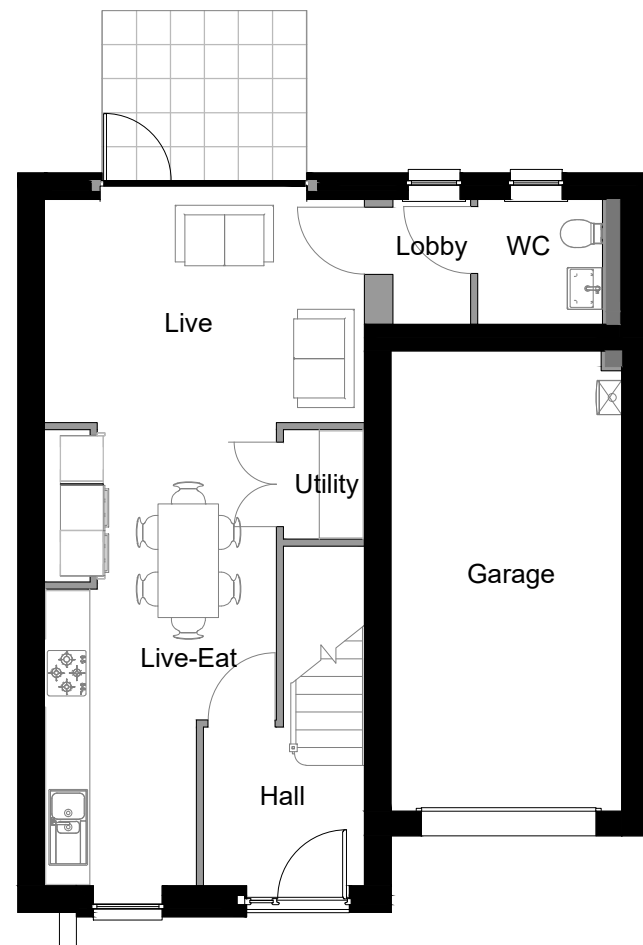
COINS REFERENCE:  
**NBY4GMD**

DRWG No:  
**NBY/002**

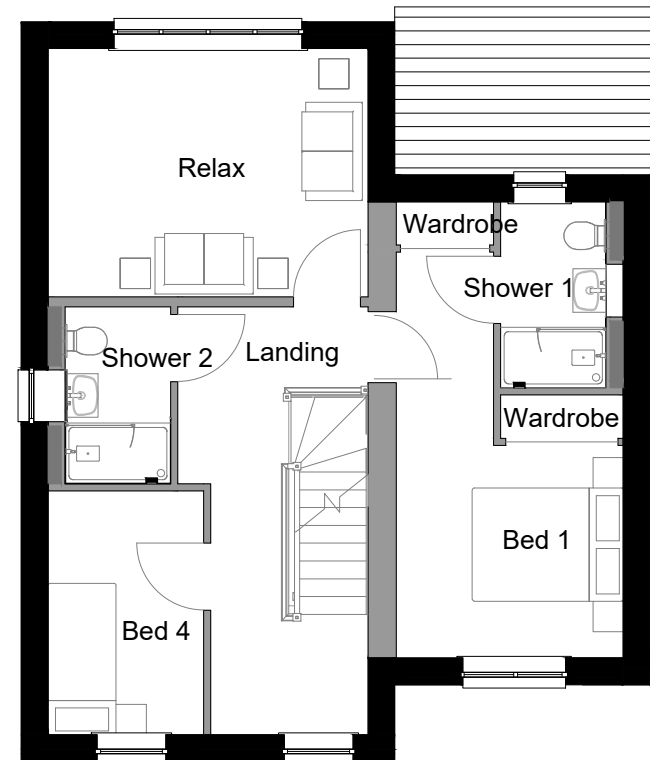
REV:  
**D**

Total Internal Area (All Floors)

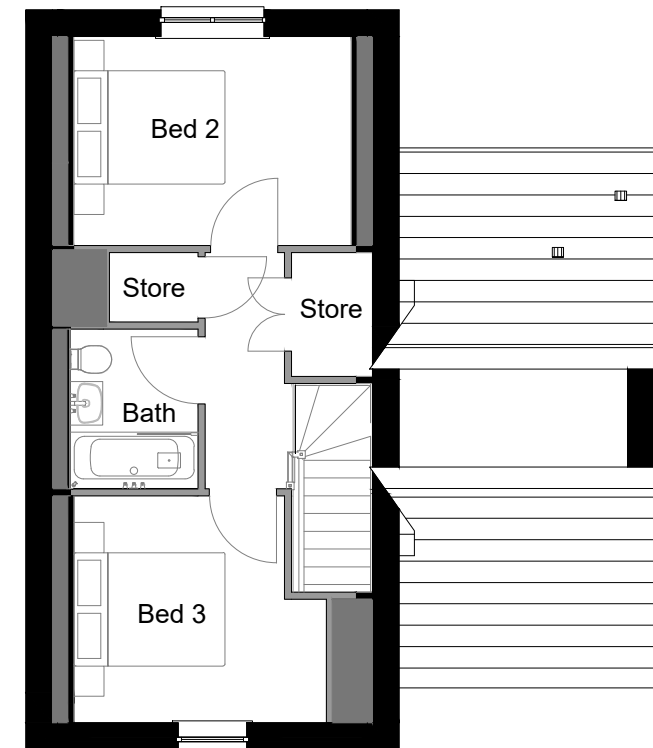
Ground Floor GIA	44.1 m <sup>2</sup>	474 ft <sup>2</sup>
First Floor GIA	58.8 m <sup>2</sup>	633 ft <sup>2</sup>
Second Floor GIA	31.9 m <sup>2</sup>	343 ft <sup>2</sup>
Grand total: 3	134.7 m <sup>2</sup>	1450 ft <sup>2</sup>



Ground Floor.  
1 : 100



First Floor.  
1 : 100



Second Floor.  
1 : 100

REV	DATE	BY	AMENDMENTS
D	19/06/2019	EA	Area amended to 1450sqft.
C	12/04/2019	SF	Balustrade design updated. Front elevation windows resized. Extents of timber cladding increased & canopy size adjusted.
B	12/03/2019	EA	Garage personnel door removed.
A	21/12/2018	LB	First Issue

**AVANT**  
homes

**O7 SPECIFICATION**

**Construction**

**Area:** 134.7 m<sup>2</sup> / 1450 sq.ft.

DATE:	SCALE @ A3:	DRAWN BY:
01/11/2018	1 : 100	LB

DWG TITLE:  
**Planning Sheet - Floor Plans  
Owlthorpe Special**

HOUSE TYPE:  
**Napsbury - Det**

COINS REFERENCE:  
**NBY4GMD**

DRWG No:  
**NBY/001**

REV:  
**D**



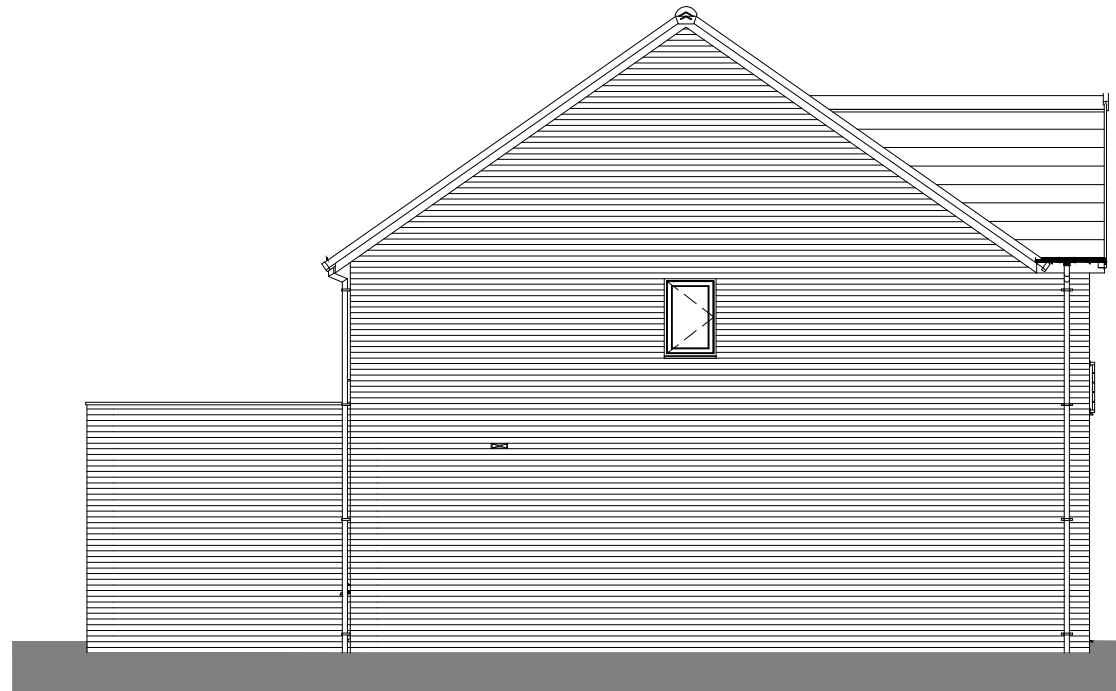
Front Elevation.  
1 : 100



Right Side Elevation.  
1 : 100



Rear Elevation.  
1 : 100

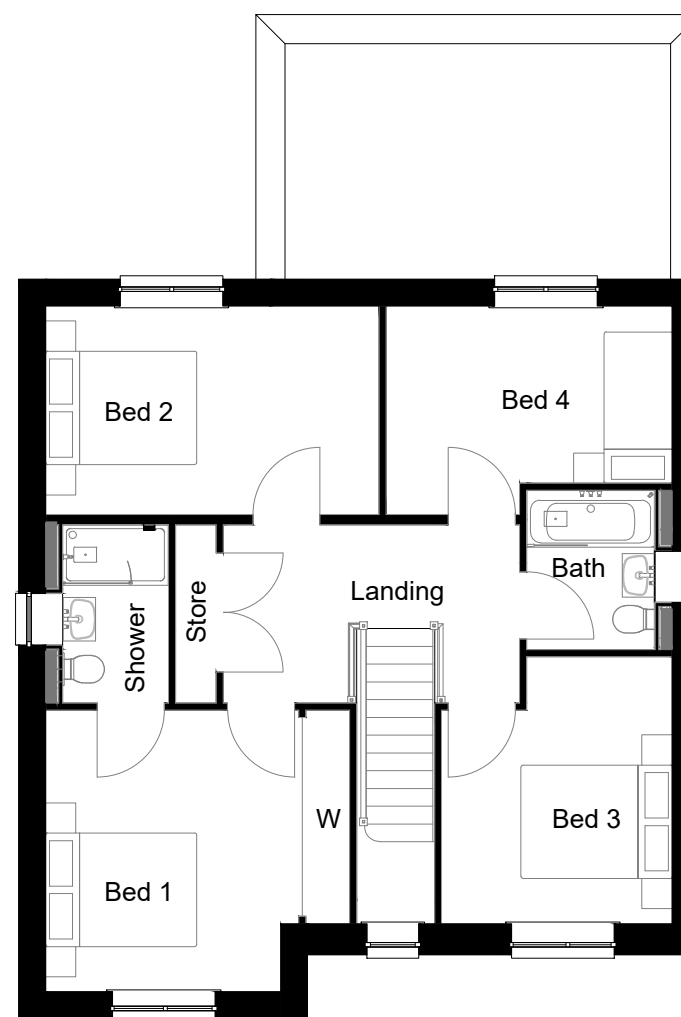
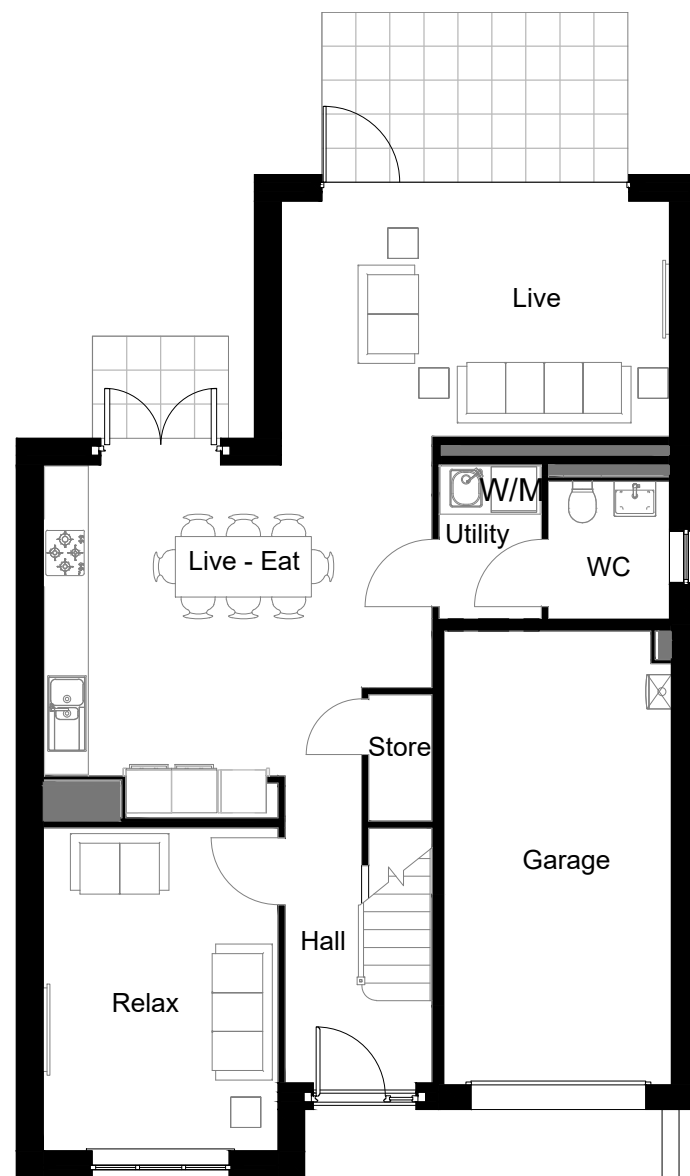


Left Side Elevation.  
1 : 100

C	12/04/2019	SF	Windows fenestration updated to front elevation. Balustrade design updated.
B	08/03/2019	SF	Coloured elevations added.
A	21/12/2018	LB	First Issue
REV	DATE	BY	AMENDMENTS
<b>AVANT</b> homes			
<b>O7 SPECIFICATION</b>			
<b>Construction</b>			
<b>Area:</b> 139.6 m <sup>2</sup> / 1503 sq.ft.			
DATE:	24/10/2018	SCALE @ A3:	1 : 100
DWG TITLE:	Planning Sheet - Elevations Owlthorpe Special		
HOUSE TYPE:	Sudbury - Det		
COINS REFERENCE:	SBY4GMD		
DRWG No:	SBY/002		REV: C

Total Internal Area (All Floors)

Ground Floor GIA	69.1 m <sup>2</sup>	744 ft <sup>2</sup>
First Floor GIA	70.5 m <sup>2</sup>	759 ft <sup>2</sup>
Grand total: 2	139.6 m <sup>2</sup>	1503 ft <sup>2</sup>



First Floor.  
1 : 100

REV	DATE	BY	AMENDMENTS
B	09/03/2019	SF	Garage personnel door removed.
A	21/12/2018	LB	First Issue
<b>AVANT</b> homes			
<b>O7 SPECIFICATION</b>			
<b>Construction</b>			
<b>Area:</b> 139.6 m <sup>2</sup> / 1503 sq.ft.			
DATE:	SCALE @ A3:	DRAWN BY:	
24/10/2018	1 : 100	LB	
DWG TITLE:			
Planning Sheet - Floor Plans Owlthorpe Special			
HOUSE TYPE:			
Sudbury - Det			
COINS REFERENCE:			
SBY4GMD			
DRWG No:			REV:
SBY/001			B





Front Elevation.  
1 : 100



Right Side Elevation.  
1 : 100



Rear Elevation.  
1 : 100

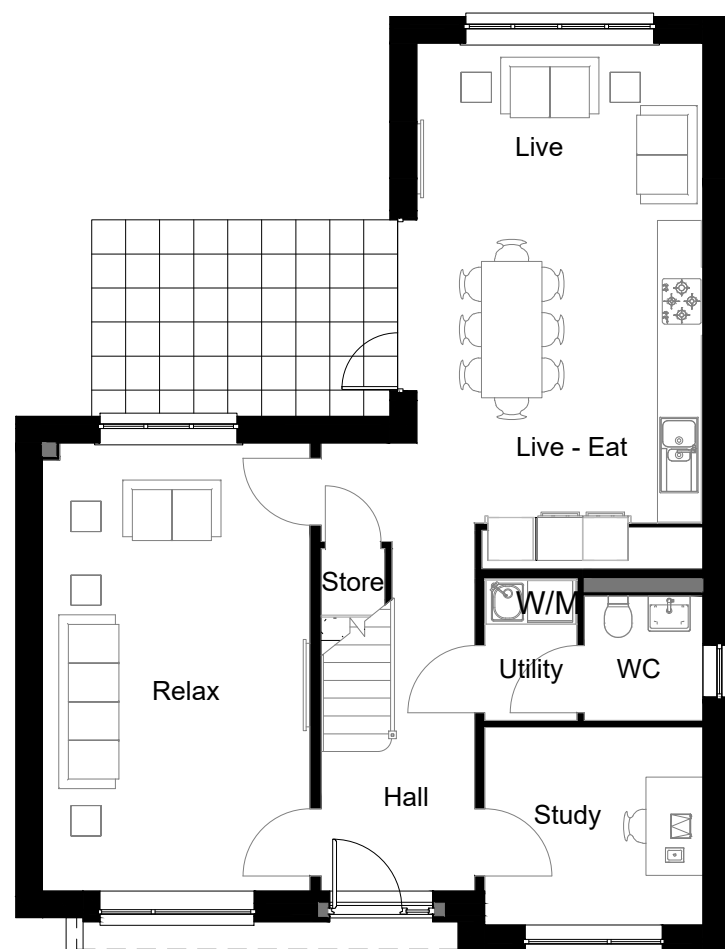


Left Side Elevation.  
1 : 100

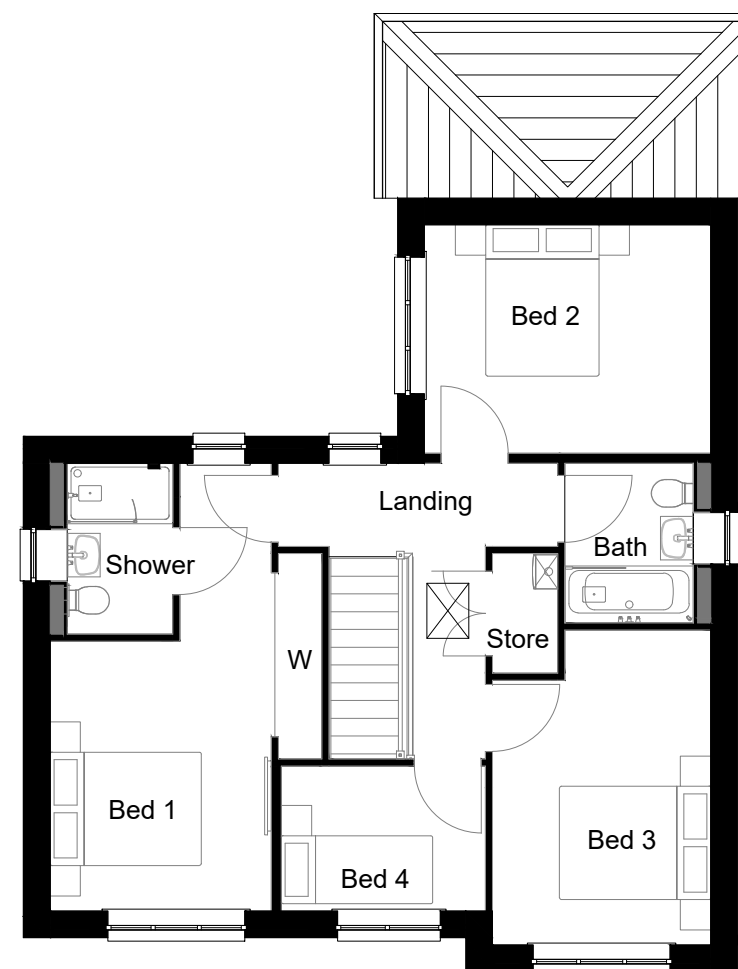
REV	DATE	BY	AMENDMENTS
B	04/04/2019	SF	Balustrade design updated. Windows fenestration, timber cladding & timber cladding extents updated to front elevation. Fuse switch incorporated into Elec box.
A	21/12/2018	JF	First Issue
			
<b>07 SPECIFICATION</b>			
<b>Construction</b>			
<b>Area:</b> 138.0 m <sup>2</sup> / 1485 sq.ft.			
DATE:	20/04/2018	SCALE @ A3:	1 : 100
DWG TITLE:	Planning Sheet - Elevations Owlthorpe Special		
HOUSE TYPE:	Ramsbury		
COINS REFERENCE:	RBY4GMD		
DRWG No:	RBY/002	REV:	C

Total Internal Area (All Floors)

Ground Floor GIA	73.0 m <sup>2</sup>	786 ft <sup>2</sup>
First Floor GIA	65.0 m <sup>2</sup>	699 ft <sup>2</sup>
Grand total: 2	138.0 m <sup>2</sup>	1485 ft <sup>2</sup>



Ground Floor.  
1 : 100



First Floor.  
1 : 100

A	21/12/2018	JF	First Issue
REV	DATE	BY	AMENDMENTS
<b>AVANT</b> homes			
<b>O7 SPECIFICATION</b>			
<b>Construction</b>			
<b>Area:</b> 138.0 m <sup>2</sup> / 1485 sq.ft.			
DATE:	20/04/2018	SCALE @ A3:	1 : 100
DWG TITLE:	Planning Sheet - Floor Plans Owlsthorpe Special		
HOUSE TYPE:	Ramsbury		
COINS REFERENCE:	RBY4GMD		
DRWG No:	RBY/001	REV:	A



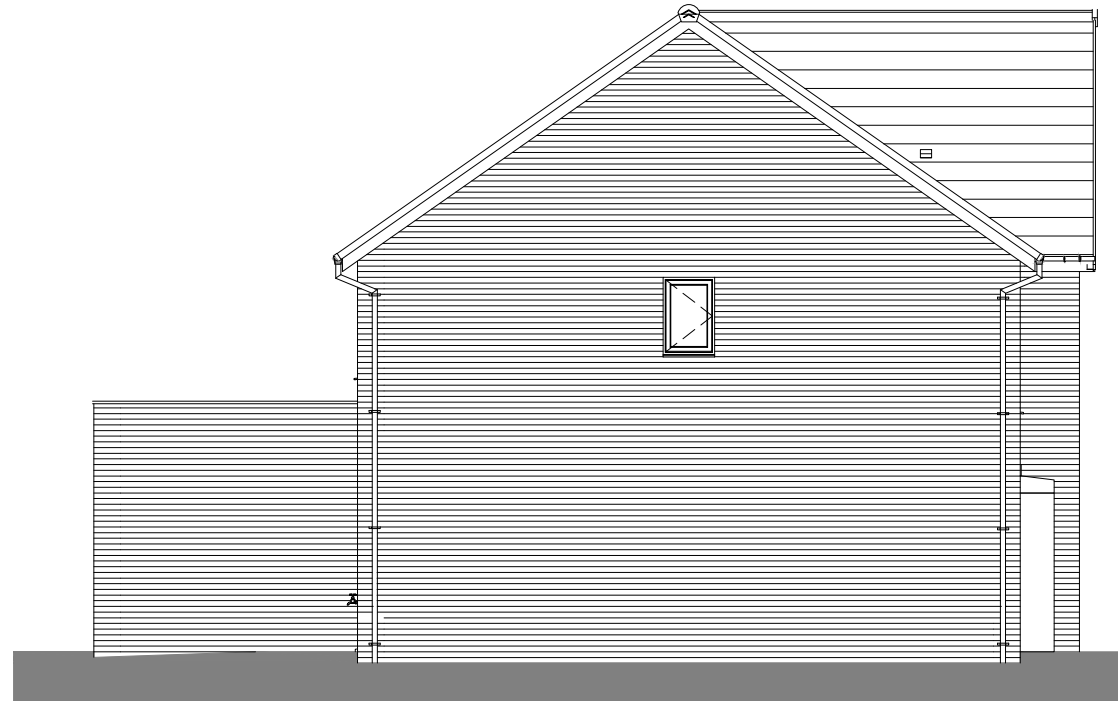
Front Elevation.  
1 : 100



Right Side Elevation.  
1 : 100



Rear Elevation.  
1 : 100



Left Side Elevation.  
1 : 100

B	09/03/2019	EA	Coloured elevations added.
A	21/12/2018	LB	First Issue
REV	DATE	BY	AMENDMENTS
<b>AVANT</b> homes			
<b>O7 SPECIFICATION</b>			
<b>Construction</b>			
<b>Area:</b> 161.9 m <sup>2</sup> / 1742.9 sq.ft.			
DATE:	25/10/2018	SCALE @ A3:	1 : 100
DWG TITLE:	Planning Sheet - Elevations Owlthorpe Special		
HOUSE TYPE:	Chesham - Det		
COINS REFERENCE:	CHM5GMD		
DRWG No:	CHM/002	REV:	C

Total Internal Area (All Floors)

Ground Floor GIA	70.1 m <sup>2</sup>	754 ft <sup>2</sup>
First Floor GIA	91.9 m <sup>2</sup>	989 ft <sup>2</sup>
Grand total: 2	161.9 m <sup>2</sup>	1743 ft <sup>2</sup>



Ground Floor.  
1 : 100



First Floor.  
1 : 100

REV	DATE	BY	AMENDMENTS
A	21/12/2018	LB	First Issue
<b>AVANT</b> homes			
<b>O7 SPECIFICATION</b>			
<b>Construction</b>			
<b>Area:</b> 161.9 m <sup>2</sup> / 1742.9 sq.ft.			
DATE:	SCALE @ A3:	DRAWN BY:	
25/10/2018	1 : 100	LB	
DWG TITLE:			
Planning Sheet - Floor Plans			
Owlthorpe Special			
HOUSE TYPE:			
Chesham - Det			
COINS REFERENCE:			
CHM5GMD			
DRWG No:	REV:		
CHM/001	A		



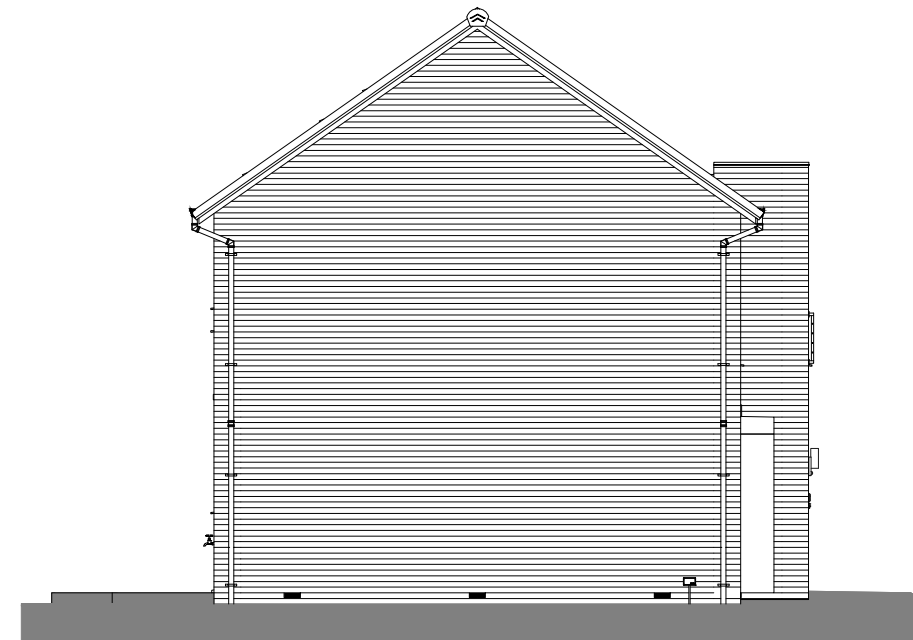
Front Elevation.  
1 : 100



Right Side Elevation.  
1 : 100



Rear Elevation.  
1 : 100

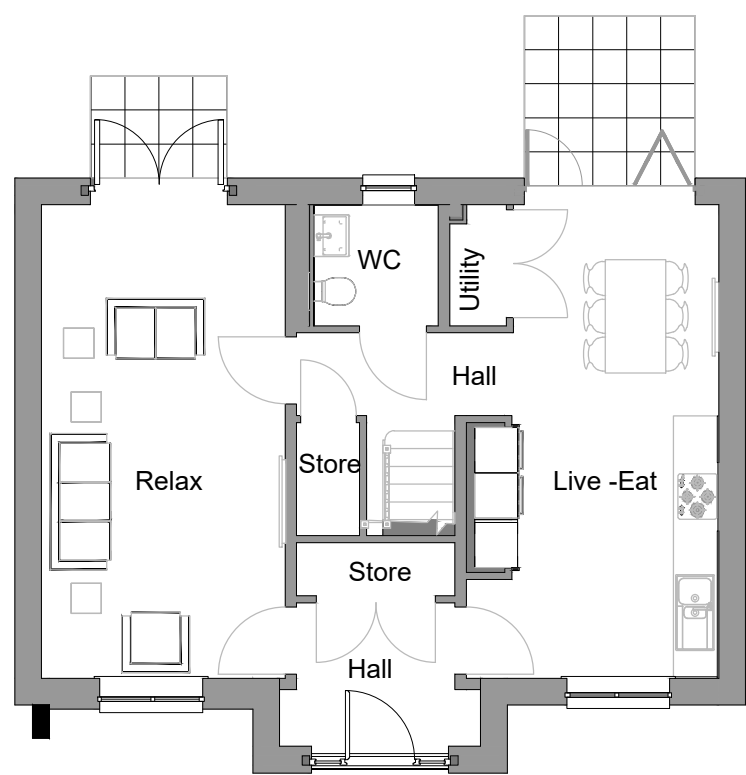


Left Side Elevation.  
1 : 100

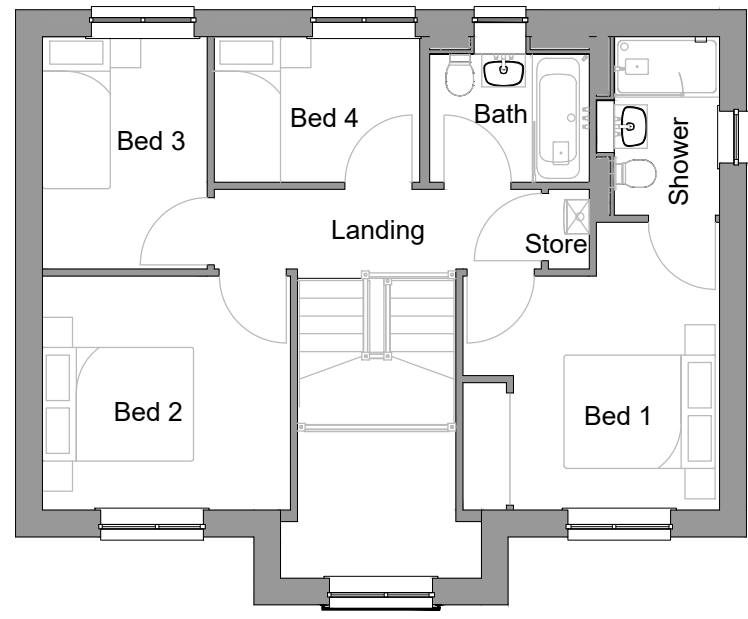
REV	DATE	BY	AMENDMENTS
<h1>AVANT</h1> <p>homes</p>			
<b>O7 SPECIFICATION</b>			
<b>Construction</b>			
<b>Area:</b> 161.9 m <sup>2</sup> / 1742.9 sq.ft.			
DATE:	25/10/2018	SCALE @ A3:	1 : 100
DWG TITLE:	Planning Sheet - Elevations Owlthorpe Special		
HOUSE TYPE:	Denbury - Det		
COINS REFERENCE:	DBYG D4		
DRWG No:	DBY/012	REV:	A

Total Internal Area (All Floors)

Ground Floor GIA	58.5 m <sup>2</sup>	630 ft <sup>2</sup>
First Floor GIA	58.5 m <sup>2</sup>	630 ft <sup>2</sup>
Grand total: 2	117.0 m <sup>2</sup>	1259 ft <sup>2</sup>



Ground Floor.  
1 : 100



First Floor.  
1 : 100

REV	DATE	BY	AMENDMENTS
B	02/04/2019	SF	Window fenestration updated. Timber cladding added, canopy resized & balustrade design updated. Fuse switch incorporated into Elec box.
A	21/12/2018	LB	First Issue

**AVANT**  
homes

**O7 SPECIFICATION**

**Construction**

**Area:** 117.0 m<sup>2</sup> / 1259 sq.ft.

DATE:	SCALE @ A3:	DRAWN BY:
21/12/2018	1 : 100	LB

DWG TITLE:  
**Planning Sheet - Floor Plans**

HOUSE TYPE:  
**Denbury - Det - Vogue**

COINS REFERENCE:  
**DBYG D4**

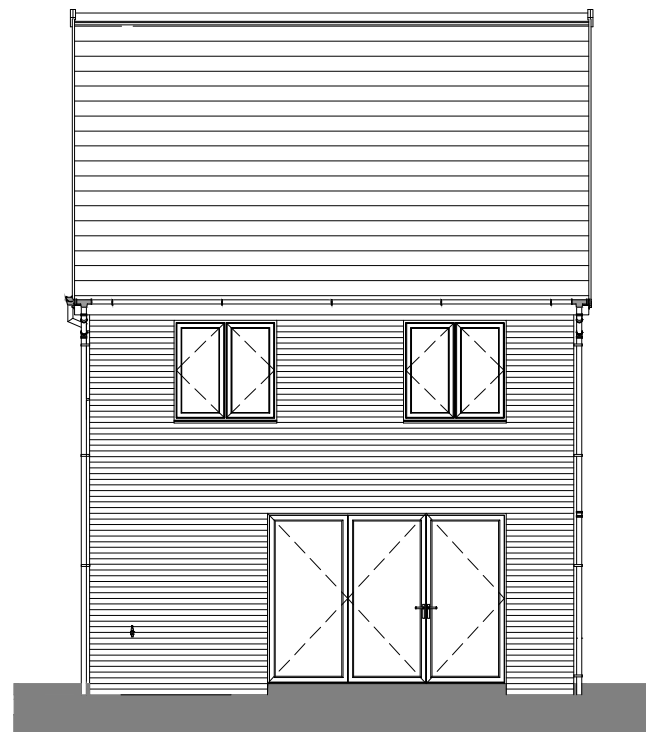
DRWG No:	REV:
DBY/001	B



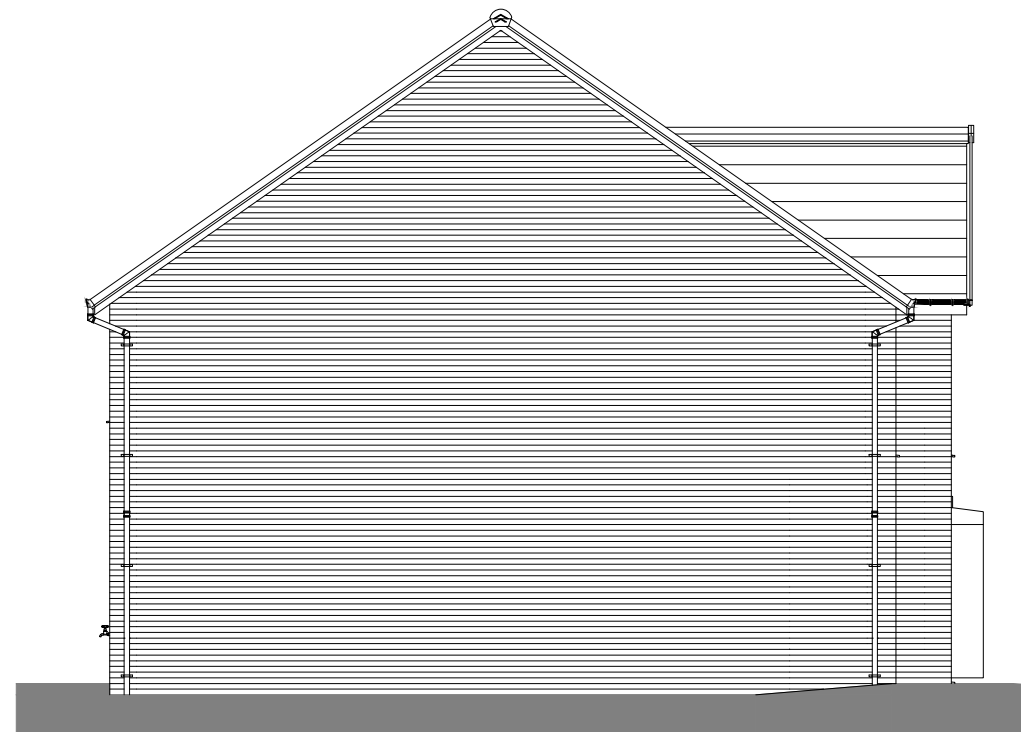
Front Elevation.  
1 : 100



Right Side Elevation.  
1 : 100



Rear Elevation.  
1 : 100

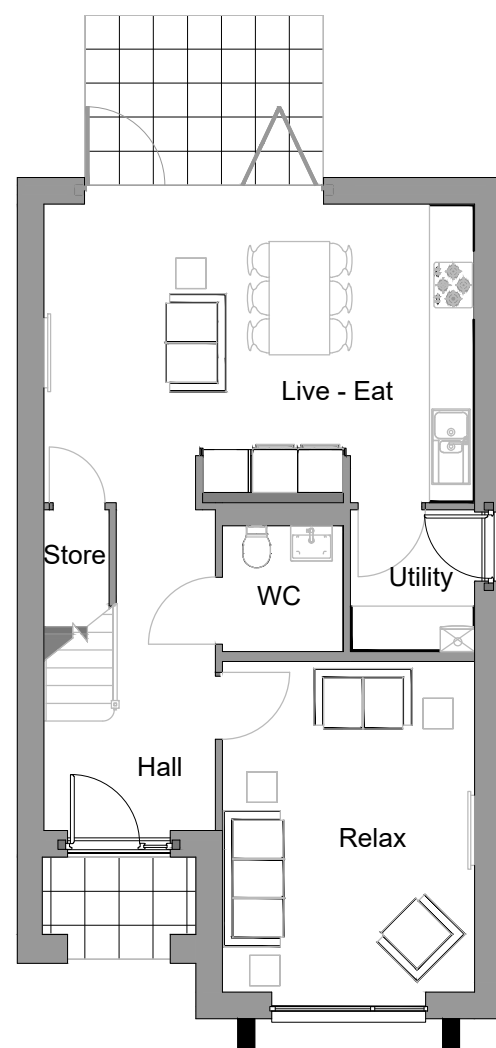


Left Side Elevation.  
1 : 100

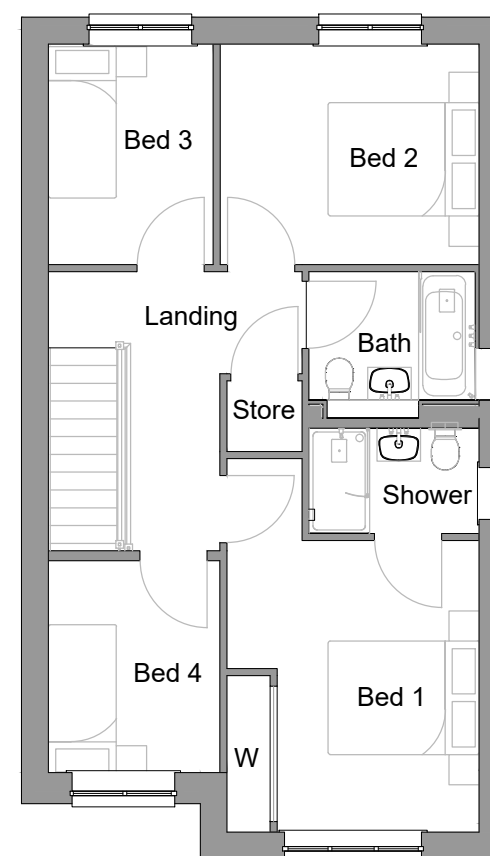
REV	DATE	BY	AMENDMENTS
<b>AVANT</b> homes			
<b>07 SPECIFICATION</b>			
<b>Construction</b>			
<b>Area:</b> 161.9 m <sup>2</sup> / 1742.9 sq.ft.			
DATE:	25/10/2018	SCALE @ A3:	1 : 100
DWG TITLE:	Planning Sheet - Elevations Owlthorpe Special		
HOUSE TYPE:	Finsbury - Det		
COINS REFERENCE:	FBY4GMD		
DRWG No:	FBY/009	REV:	A

Total Internal Area (All Floors)

Ground Floor GIA	54.3 m <sup>2</sup>	585 ft <sup>2</sup>
First Floor GIA	57.5 m <sup>2</sup>	619 ft <sup>2</sup>
Grand total: 2	111.9 m <sup>2</sup>	1204 ft <sup>2</sup>



Ground Floor.  
1 : 100



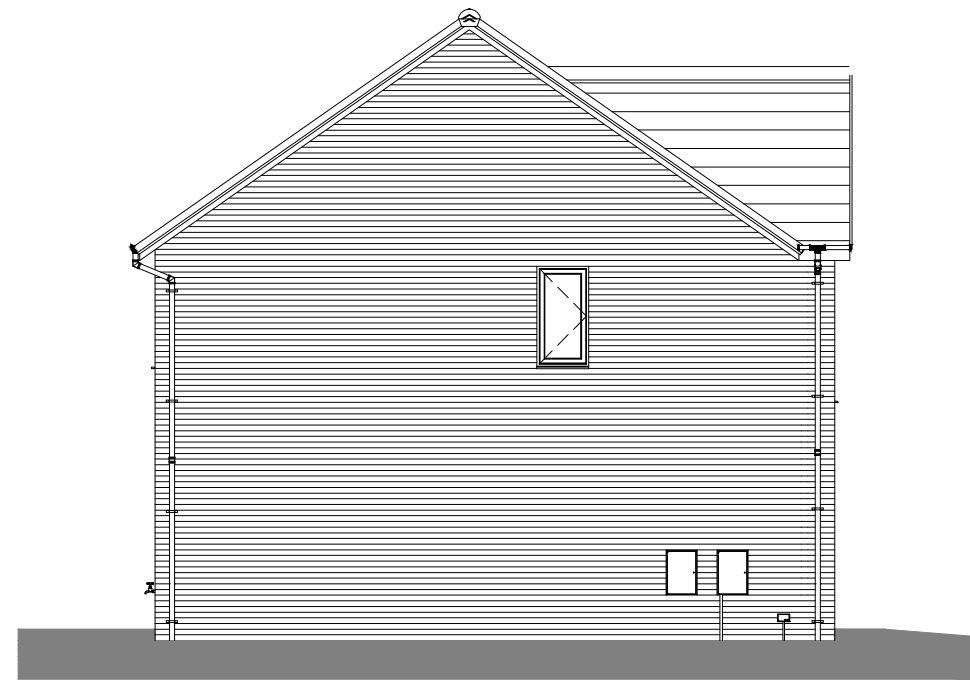
First Floor.  
1 : 100

B	12/04/2019	EA	Bed 1 window resized. Balustrade design updated.
A	21/12/2018	LB	First Issue
REV	DATE	BY	AMENDMENTS
<b>AVANT</b> homes			
<b>O7 SPECIFICATION</b>			
<b>Construction</b>			
<b>Area:</b> 111.90 m <sup>2</sup> / 1204 sq.ft.			
DATE:	18/10/2018	SCALE @ A3:	1 : 100
DRAWN BY:			LB
DWG TITLE: <b>Planning Sheet - Floor Plans</b>			
HOUSE TYPE: <b>Finsbury Det - Vogue</b>			
COINS REFERENCE: <b>FBY4GMD</b>			
DRWG No:	<b>FBY/001</b>	REV:	<b>B</b>

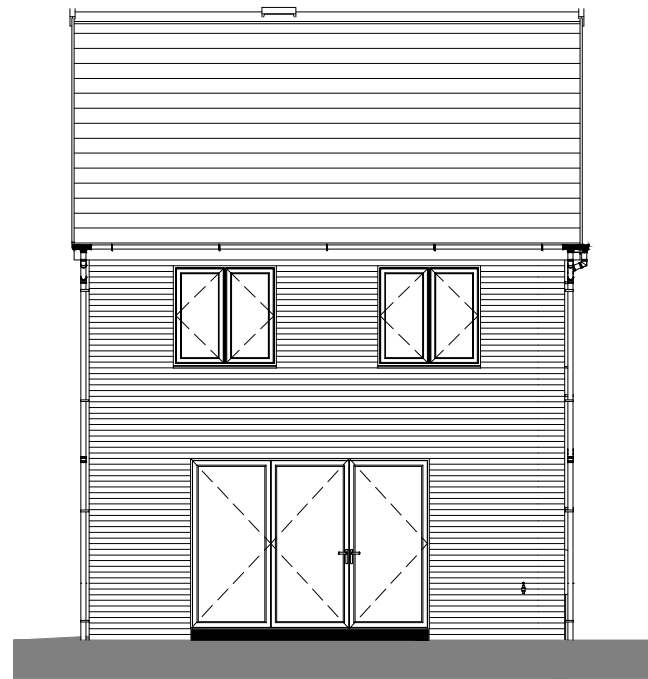




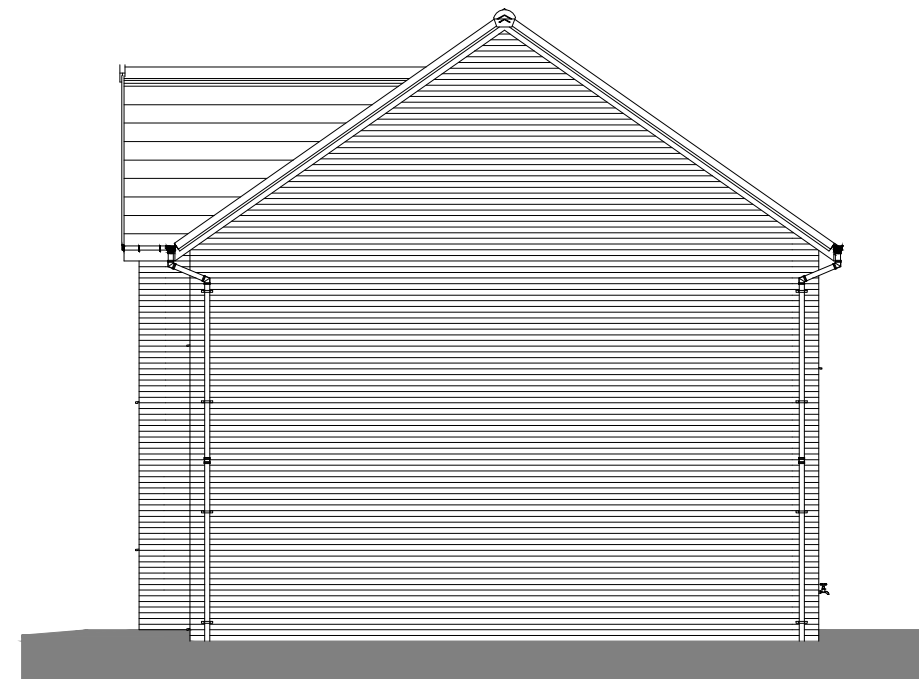
Front Elevation.  
1 : 100



Right Side Elevation.  
1 : 100



Rear Elevation.  
1 : 100

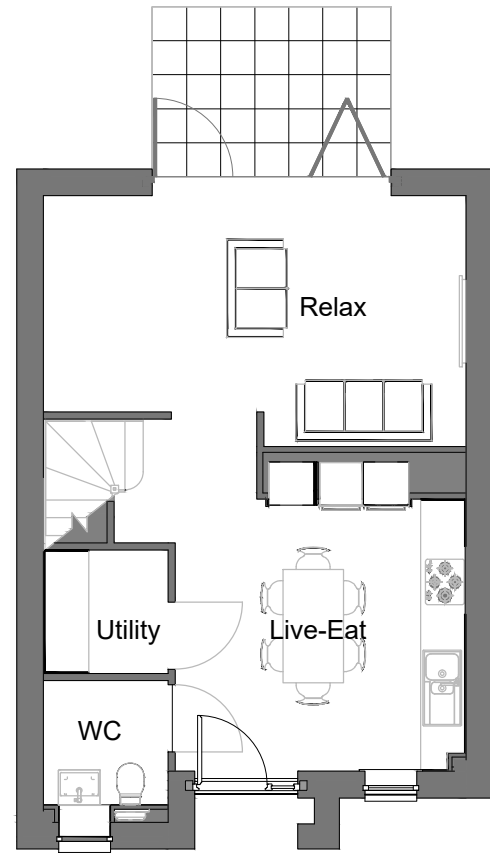


Left Side Elevation.  
1 : 100

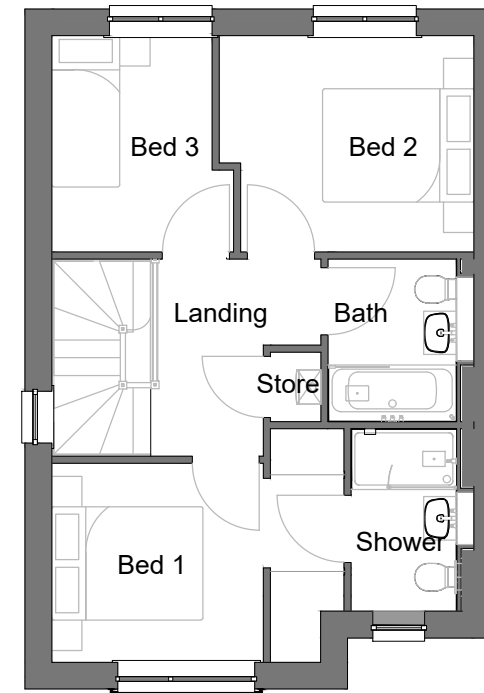
REV	DATE	BY	AMENDMENTS
<b>AVANT</b> homes			
<b>O7 SPECIFICATION</b>			
<b>Construction</b>			
<b>Area:</b> 161.9 m <sup>2</sup> / 1742.9 sq.ft.			
DATE:	25/10/2018	SCALE @ A3:	1 : 100
DWG TITLE:	Planning Sheet - Elevations Owlthorpe Special		
HOUSE TYPE:	Kinnerton - Det		
COINS REFERENCE:	KTN3GMD		
DRWG No:	KTN/009	REV:	C

Total Internal Area (All Floors)

Ground Floor GIA	43.6 m <sup>2</sup>	469 ft <sup>2</sup>
First Floor GIA	44.9 m <sup>2</sup>	483 ft <sup>2</sup>
Grand total: 2	88.5 m <sup>2</sup>	953 ft <sup>2</sup>

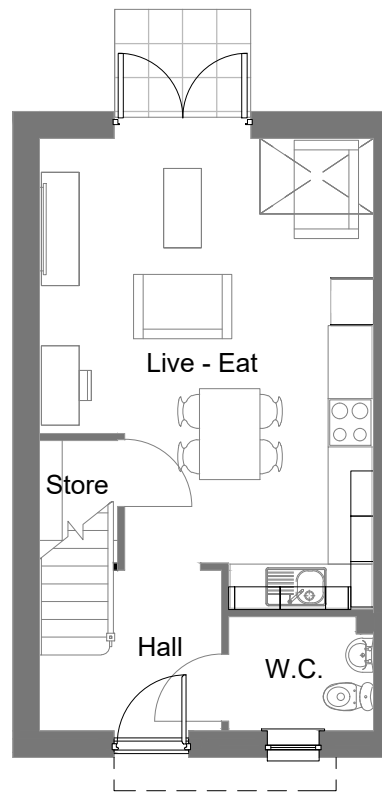


Ground Floor.  
1 : 100



First Floor.  
1 : 100

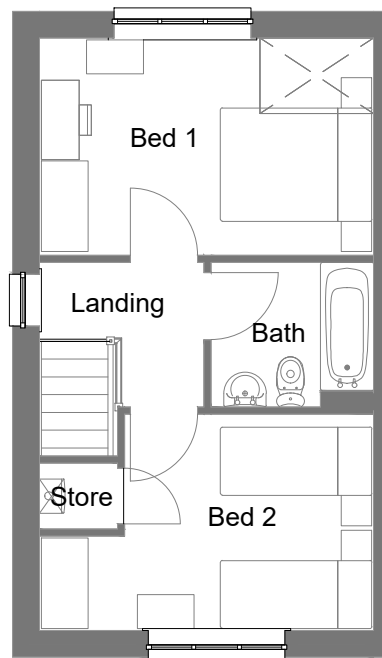
B	19/06/2019	EA	Area amended to 953sqft.
A	21/12/2018	LB	First Issue
REV	DATE	BY	AMENDMENTS
<b>AVANT</b> homes			
<b>O7 SPECIFICATION</b>			
<b>Construction</b>			
<b>Area:</b> 88.5 m <sup>2</sup> / 953 sq.ft.			
DATE:	SCALE @ A3:	DRAWN BY:	
17/10/2018	1 : 100	LB	
DWG TITLE: <b>Planning Sheet - Floor Plans</b>			
HOUSE TYPE: <b>Kinnerton - Det - Vogue</b>			
COINS REFERENCE: <b>KTN3GMD</b>			
DRWG No: <b>KTN/001</b>			REV: <b>B</b>



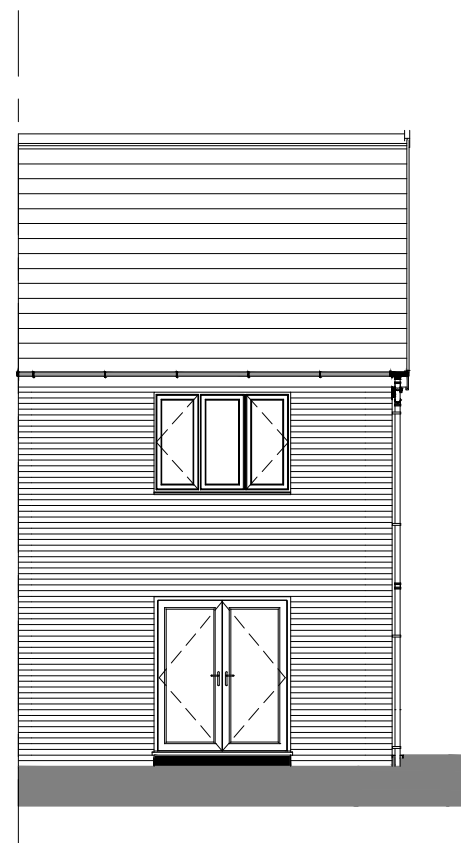
Ground Floor.  
1 : 100



Front Elevation.  
1 : 100



First Floor.  
1 : 100



Rear Elevation.  
1 : 100



Left Elevation.  
1 : 100

Total Internal Area (All Floors)

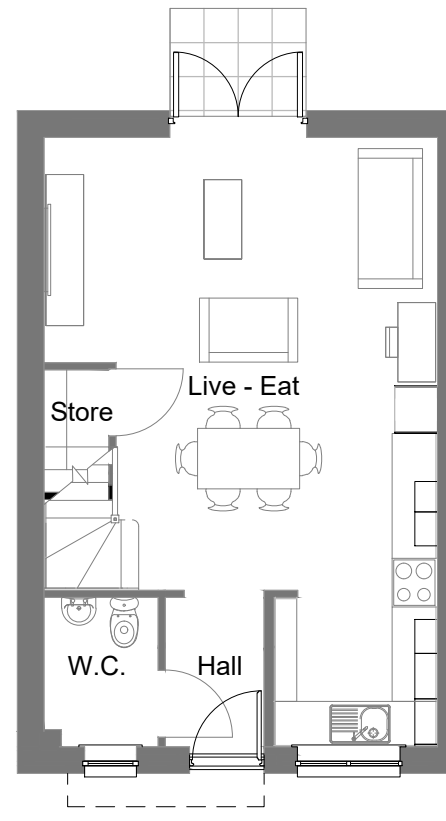
Ground Floor GIA	34.6 m <sup>2</sup>	373 ft <sup>2</sup>
First Floor GIA	34.6 m <sup>2</sup>	373 ft <sup>2</sup>
Grand total: 2	69.2 m <sup>2</sup>	745 ft <sup>2</sup>

A	27/11/18	PB	First Issue
REV	DATE	BY	AMENDMENTS
<b>AVANT</b> homes			
<b>A7 SPECIFICATION</b>			
<b>CONSTRUCTION</b>			
<b>Area:</b> 69.20 m <sup>2</sup> / 745 sq.ft.			
DATE:	27/11/18	SCALE @ A3:	1 : 100
DWG TITLE:	Planning Sheet - Floor Plans & Elevations - Owlthorpe Spec		
HOUSE TYPE:	Helmsdale - End		
COINS REFERENCE:	HEL2GME2018		
DRWG No:	HEL/001	REV:	A

14/08/2019 16:20:39

Total Internal Area (All Floors)

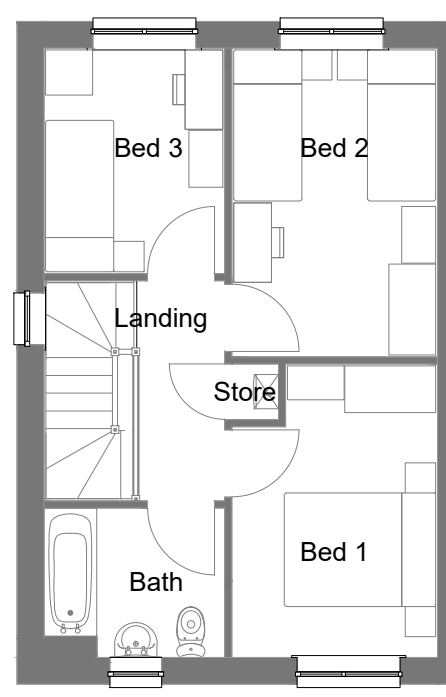
Ground Floor GIA	42.0 m <sup>2</sup>	452 ft <sup>2</sup>
First Floor GIA	42.0 m <sup>2</sup>	452 ft <sup>2</sup>
Grand total: 2	83.9 m <sup>2</sup>	903 ft <sup>2</sup>



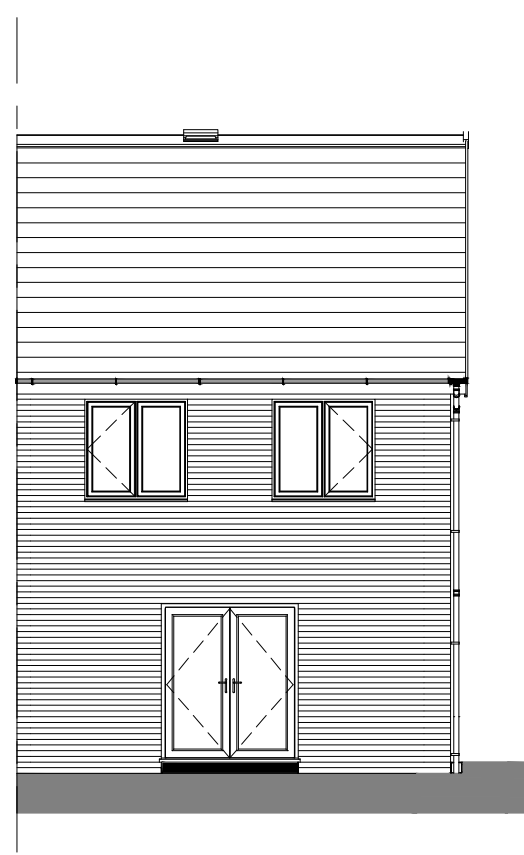
Ground Floor.  
1 : 100



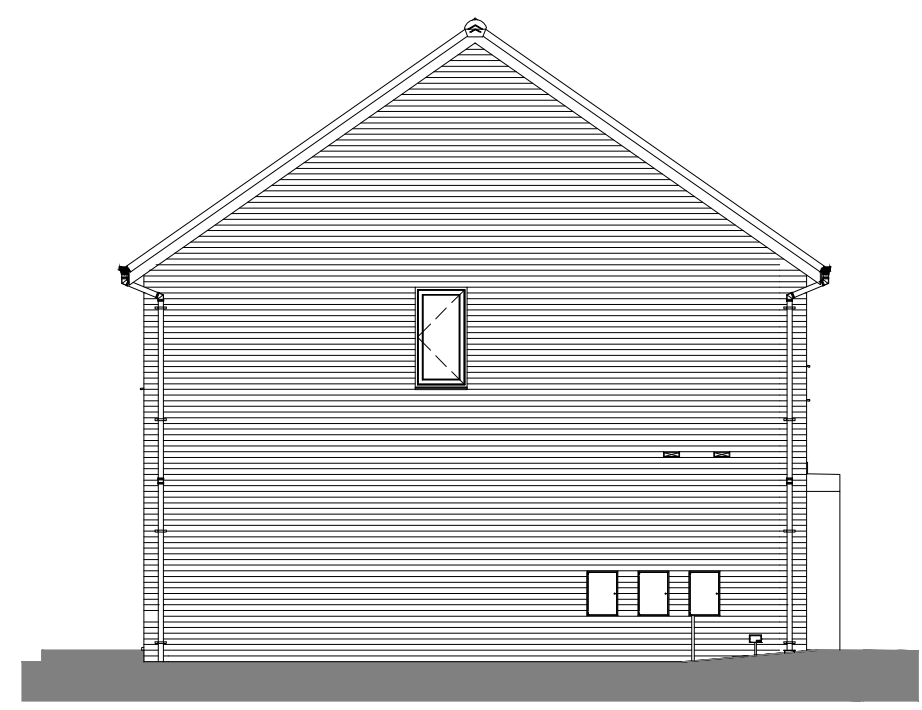
Front Elevation.  
1 : 100



First Floor.  
1 : 100



Rear Elevation.  
1 : 100



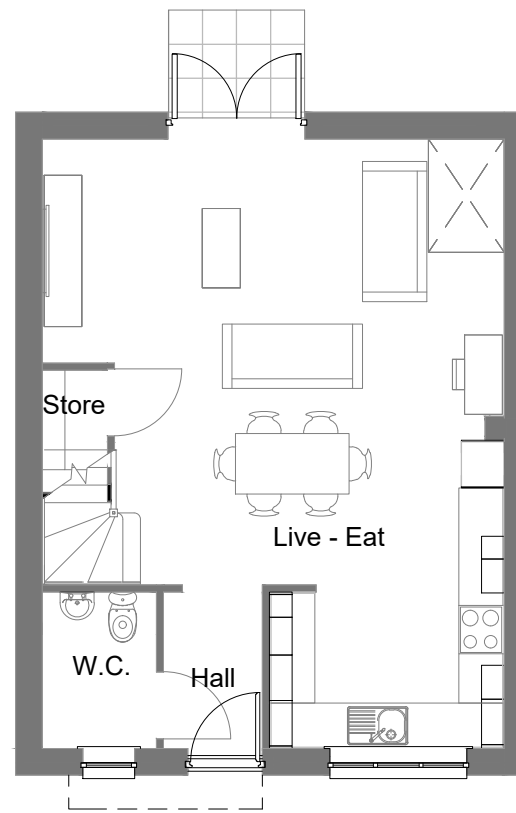
Left Elevation.  
1 : 100

A	27/11/18	PB	First Issue
REV	DATE	BY	AMENDMENTS
<b>AVANT</b> homes			
<b>A7 SPECIFICATION</b>			
<b>CONSTRUCTION</b>			
<b>Area:</b> 83.90 m <sup>2</sup> / 903 sq.ft.			
DATE:	27/11/18	SCALE @ A3:	1 : 100
DWG TITLE:	Planning Sheet - Floor Plans & Elevations Owlthorpe Spec		
HOUSE TYPE:	Nithsdale - End		
COINS REFERENCE:	NIT3GME2018		
DRWG No:	NIT/001	REV:	A

14/08/2019 16:24:17

Total Internal Area (All Floors)

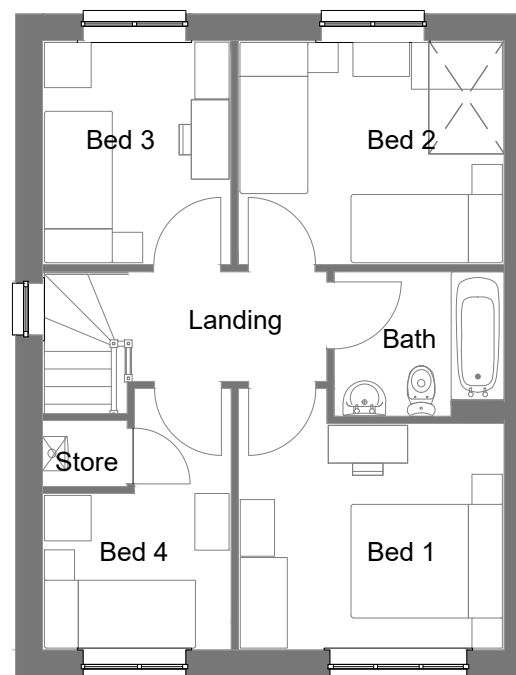
Ground Floor GIA	49.2 m <sup>2</sup>	530 ft <sup>2</sup>
First Floor GIA	49.2 m <sup>2</sup>	530 ft <sup>2</sup>
Grand total: 2	98.4 m <sup>2</sup>	1059 ft <sup>2</sup>



Ground Floor.  
1 : 100



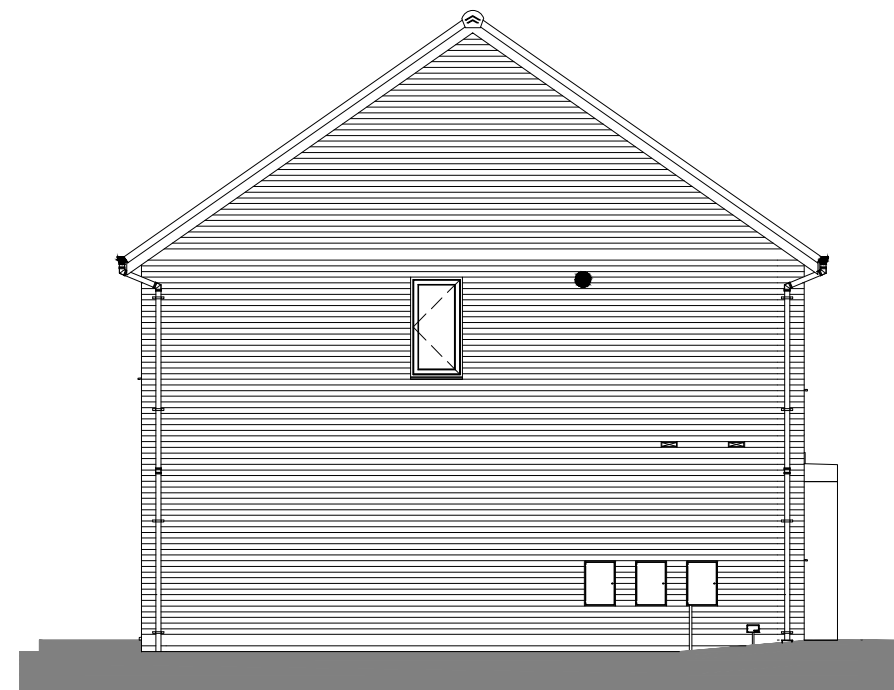
Front Elevation.  
1 : 100



First Floor.  
1 : 100



Rear Elevation.  
1 : 100



Left Elevation.  
1 : 100

A	27/11/18	PB	First Issue
REV	DATE	BY	AMENDMENTS
<b>AVANT</b> homes			
<b>A7 SPECIFICATION</b>			
<b>CONSTRUCTION</b>			
<b>Area:</b> 98.40 m <sup>2</sup> / 1059 sq.ft.			
DATE:	27/11/18	SCALE @ A3:	1 : 100
DWG TITLE:	Planning Sheet - Floor Plans & Elevations Owlthorpe Spec		
HOUSE TYPE:	Weydale - End		
COINS REFERENCE:	WEY4GME2018		
DRWG No:	WEY/001	REV:	A